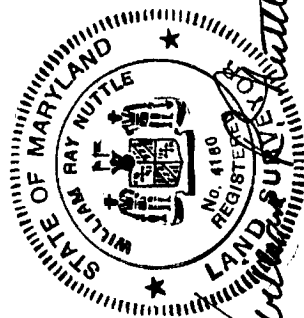


JOHN E. GEORGE, JR.

BETTY C. CLOUGH

PLAT OF A SURVEY OF THE
DOROTHY C. BLADES LANDS
 SUDLEYSVILLE, QUEEN ANNES CO., MD.

Scale 1"=30'
 Aug. 1994.
 William R. Nuttle, Reg. Surveyor
 Chestertown, Md.



I.P. = iron pipe

DESCRIPTION OF THE DOROTHY C. BLADES LANDS,
SUDLERSVILLE, QUEEN ANNES COUNTY, MD.

Beginning for the same at a steel rod and cap found near the back of the curb on the east side of North Church Street, said point being the southwest corner of the herein described lands and the northwest corner of the lands of Betty C. Clough; and running, thence, by and with the east side of North Church Street N 01 15 W - 92.00' to an iron pipe and the lands of Arraminta Ware; thence, by and with said Ware lands N 88 56 20 E - 194.08' to a large iron pipe and the lands of John E. George, Jr.; thence, by and with said George lands S 26 12 W - 35.04' to a large iron pipe and S 02 09 E - 59.59' to a third large iron pipe and the lands of Betty Clough; thence, by and with said Clough lands S 88 32 W - 176.87' to the place of beginning. Containing in all 0.380 acres of land, more or less.

August 29, 1994.

William R. Nuttle.

Ware - 364/894

Begin on road at SW cor. Stevens
w/s E from inside of curb 203'± to Green Farm
w/s S 181'± to Blades
w/s W 203'± to inside of curb
w/s N 181'± to begin

Clough 216/494

see CWC 142/435

" 6/369

" 5/287

Parcel 4 NBW 2/545 - gen. desc.

Rash 87/430

Begin E side of rd. S 82° 30' W - 1/4 rod from town on E side
at cor. Miller lot

N 06° 45' W - 4.8 (79.20)

N 82° 30' E - 12.5 (206.25)

S 06° 45' E - 4.8

S 82° 30' W - 12.5 to begin

16.5
4.8

132.0
66.0

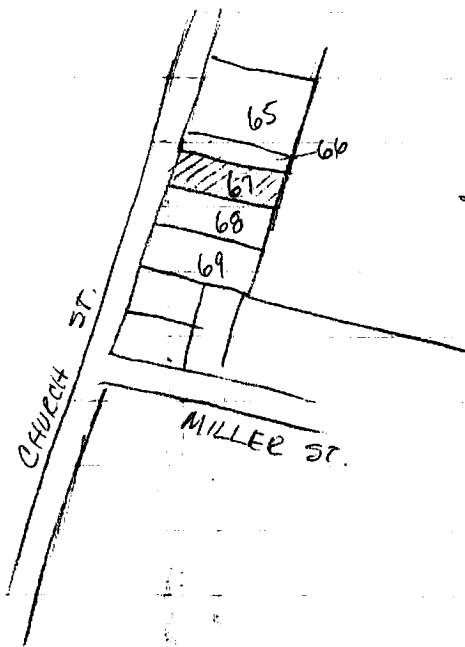
79.20

12.5
16.5

62.5
75.0
25

206.25

MAP 12A



John E. George Jr.
CWC 83/548
old descrip - many SEE's

- ✓ 65. Arraminta Ware MWM 364/894
- ✓ 66 ?
- ✓ 67 Dorothy C. Blades CWC 66/362
- 68 Betty C. Clough MWM 216/494
- 69 Roland E. Rash CWC 87/430

P.O. Box 29
Sud

Blades - CWC 66/362

see TSP 2/498, & TSP 19/580

Begin pipe or post in cor. at SE cor. herein
w/ Clayton reversed 181± to I.P. or post in cor. at rd.
w/s 60'

E 180±

st. line 59' to begin

Begin I.P. cor. Blades
w/ Blades w 180± to rd.
w/s 32±

w/ Roberts E 196± to iron peg
w/ Roberts S 36± to begin