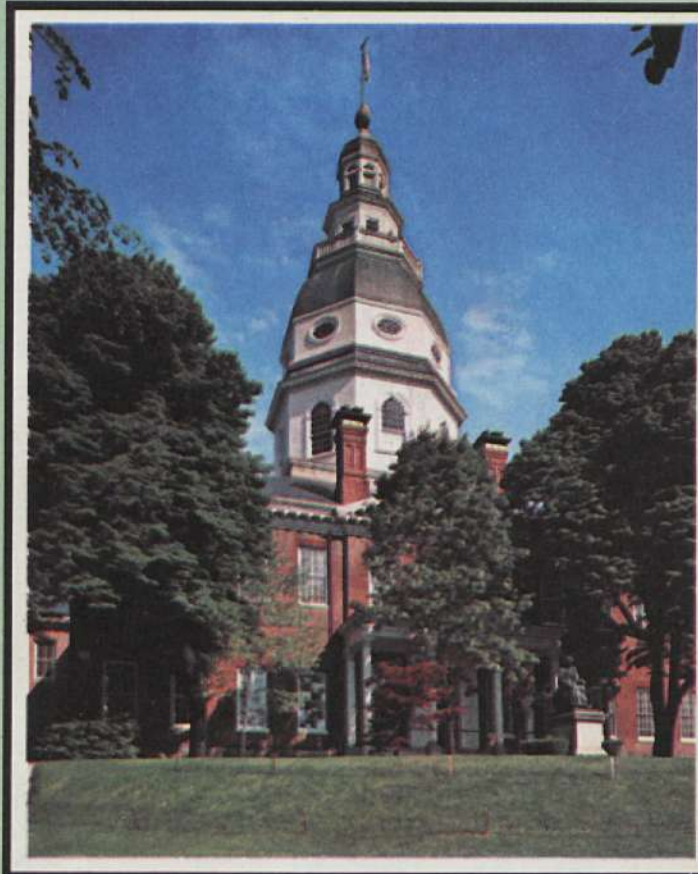


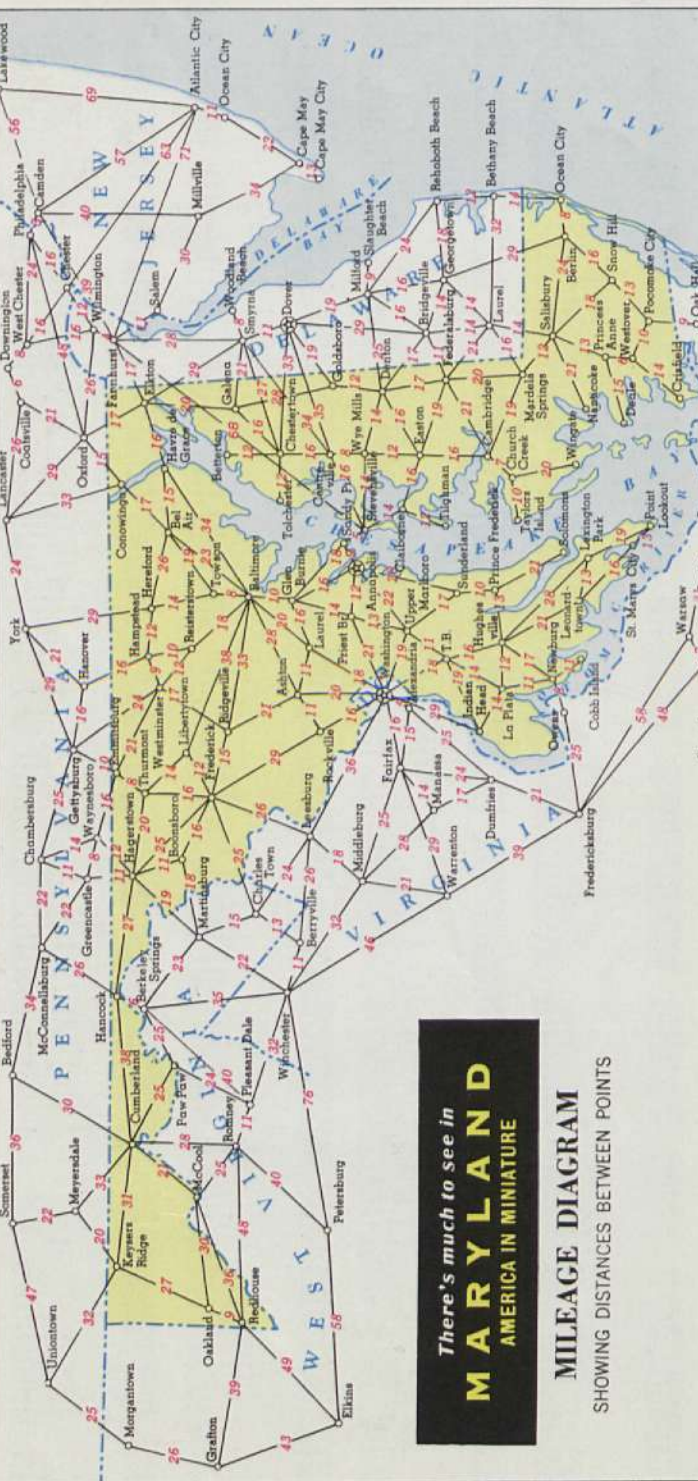
Maryland



Historic State House - Annapolis
Oldest in the Nation in daily use
Built 1772

1959

OFFICIAL HIGHWAY MAP



MAP OF MARYLAND

PREPARED BY THE
MARYLAND STATE ROADS COMMISSION
TRAFFIC DIVISION
SHOWING THE
STATE HIGHWAY SYSTEM AND
MAIN CONNECTIONS

1959

LEGEND

STATE BOUNDARY	UNIMPROVED GRAVEL ROAD
COUNTY BOUNDARY	GRAVEL AND DRAINED ROAD
FEDERAL STATE OR MUNICIPAL RESERVATION	SOIL BARREN ROAD
INCORPORATED CITY OR VILLAGE	SPRALL OF STONE ROAD
STATE OR NATIONAL CAPITAL	BITUMINOUS GRAVELLED ROAD
COUNTY SEAT	PAVED ROAD
OTHER CITIES AND VILLAGES	MAIN HIGHWAY
RAILROAD BETWEEN ROAD JUNCTIONS	PROPOSED ROAD
TOLL FERRY	U.S. NATIONAL HIGHWAY
RAILROAD - CIVIL	STATE-MAINTAINED HIGHWAY
RAILROAD - MILITARY	COUNTY CONNECTING ROAD
SEAPLANE BASE - CIVIL	ACCESS DENIED
SEAPLANE BASE - MILITARY	STATE POLICE STATION
RAILROAD AND FERRY	INTERSTATE - NUMBERED HIGHWAY
RESERVOIR, POND OR LAKE	OBSTRUCTION ON LOOKOUT TOWER
STRUCTURES ON NUMBERED HIGHWAYS WITH LESS THAN 10' VERTICAL CLEARANCE AS POSTED	ROADSIDE PINK AREA
	COVERED BRIDGE

A MESSAGE FROM GOVERNMENT HOUSE



This 1959 edition of the Official Highway Map of Maryland comes to you with the compliments of the people of Maryland. Maryland's highway system is being expanded daily. Many beautiful new dual highways are being built. Older roads are being modernized and improved; new bridges, traffic interchanges and other improvements are being installed. This map will help the motoring public to make the best possible use of these additions to our highways. To visitors within our State, this map and the beautiful pictures it contains will present an invitation to see all of Maryland, and to linger longer as our guest. To our citizens, the map will afford opportunities for exploration and discovery of many new historic, scenic and recreational areas. Wherever you travel in Maryland, whether visitor or citizen, you will find fine new accommodations, started with people pleased to serve you, eager to assist you and interested in helping you to enjoy our State to the utmost. Our engineers and road builders have incorporated every modern safety concept in all our newer highways. Your safety has been their prime concern. Won't you, too, show a corresponding interest in your own safety and well-being and drive with care, observing all the rules of the road. We hope you will enjoy using this Highway Map as much as we have enjoyed providing it for you. To add to your enjoyment, you will find more than 100 attractive scenic areas along our principal highways. These areas, and our fine system of State Forests, Parks and Recreation Areas have been created and are maintained for your use. We hope you will use them often.

Sincerely,
I. MILLARD TAWES,
Governor of Maryland

ENTRANCE-BALTIMORE HARBOR TUNNEL



The Baltimore Harbor Tunnel and its Expressway System is Maryland's largest public project. Completed in late 1957 it was built in two years and eight months, something of a record for such a vast undertaking. It cost \$130,000,000 and is financed by tolls. This Baltimore Thruway contains 15 miles of express highway in addition to the underwater crossing of the Patuxent River which forms the famed Port of Baltimore. The system connects with the major arterial highways in the Baltimore area and furnishes a quick and safe route through the City, avoiding all local traffic. The photograph on the back cover shows the southern entrance to the twin-tube tunnel, taken from the southern entrance.

FRONT COVER

Maryland's Historic State House at Annapolis, is the oldest in the Nation still in daily use. It is the third Maryland capitol to occupy the site, the first having burned in 1704, the second razed in 1772 to make way for the present structure. The 65 ton dome which crowns the gracious old building, is the only all-wooden dome in America and details of its construction intrigue engineers today. At the time of the Revolution, Maryland's capitol was considered the handsomest building in America and for almost a year it served as the embryo nation's first peace time capitol. Having won the War of the Revolution, Washington appeared here before a disorganized and capricious Congress, then in session in the Old Senate Chamber of this building, to resign his commission as commander-in-chief of the Continental Forces. Easily the greatest hero and most popular man of his time, Washington could have become king had he so desired. Instead, he chose to humble himself by appearing before a Congress which refused to rise or even to remove its hats in his honor. It was here, in Maryland's Historic Capitol, that George Washington, according to the whims of Congress, established the American tradition of the supremacy of civil over military authority. Later, in the same room, Congress ratified the treaty of peace with Great Britain which ended the war and made possible the founding of a new Nation—the United States of America. Some of the furniture used on both of these historic occasions, is still in use and may be seen in the Courtroom. Competent guides are on duty daily, Saturdays, Sundays, and most holidays, from 9:00 A.M. until 5:00 P.M. Other Maryland treasures which may be seen are the original "Old Glory", only flag known to have been carried in both the Revolutionary War and the War of 1812; priceless oil paintings and many other pieces of Maryland Americana.

MARYLAND STATE POLICE

If in need of assistance, visit or call

Headquarters	US 140, Pikesville 8, Md.	Hunter 6-3101
Barrack "A"	US 1, Jessup, Md.	Waterloo 101
Barrack "B"	US 40, Frederick, Md.	Elkridge 385
Barrack "C"	US 40, Cumberland, Md.	Parkview 5-2101
Barrack "D"	US 1, Benson, Md.	Belair 10
Barrack "E"	US 13, Salisbury, Md.	Pioneer 9-3101
Barrack "F"	US 1, Conowingo, Md.	Gladesboro 7-2101
Barrack "G"	Md. 26, Randallstown, Md.	Outfield 3-4101
Barrack "H"	US 301, Waldorf, Md.	Midway 5-4101, 8921
Barrack "I"	US 50, Easton, Md.	Talbot 2-3101
Annapolis Post	Bladen Street Army	Colonial 8-2101
Annapolis, Md.	Annapolis, Md.	Centerville 422
Centerville	County Office Building	Centerville 422
College Park	US 1, College Park, Md.	Warfield 7-3600
Hagerstown	US 11, Hagerstown, Md.	Regent 9-2101
Post	County Health Building	Greenwood 5-2101
Leonardtown	Leonardtown, Md.	Pr. Fred. 101
Pr. Frederick	Pr. Frederick, Md.	Garden 4-4401
Rockville Post	US 240 and Montgomery Avenue, Rockville, Md.	

THESE MAPS ARE FOR FREE DISTRIBUTION ONLY
For all information about Maryland, write
DIVISION OF INFORMATION
Department of Economic Development
State Office Building
Annapolis, Maryland

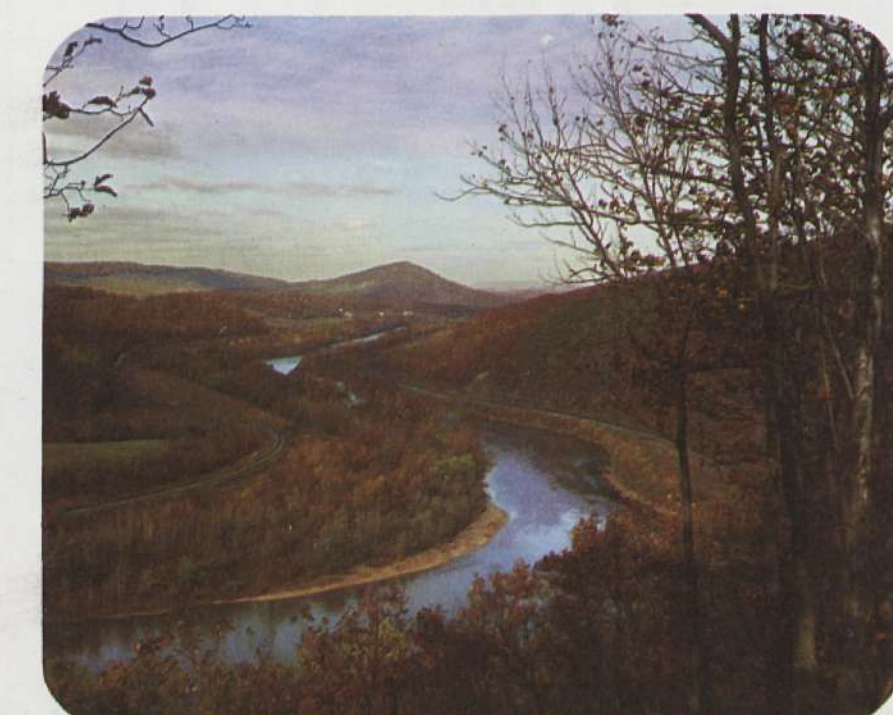
CITIES, TOWNS AND VILLAGES

A	Abingdon	100-012	Adams	100-012	Adams	100-012
B	Baltimore	100-012	Baltimore	100-012	Baltimore	100-012
C	Columbia	100-012	Columbia	100-012	Columbia	100-012
D	Danville	100-012	Danville	100-012	Danville	100-012
E	Elkton	100-012	Elkton	100-012	Elkton	100-012
F	Farmington	100-012	Farmington	100-012	Farmington	100-012
G	Georgetown	100-012	Georgetown	100-012	Georgetown	100-012
H	Hagerstown	100-012	Hagerstown	100-012	Hagerstown	100-012
I	Indianapolis	100-012	Indianapolis	100-012	Indianapolis	100-012
J	Jacksonville	100-012	Jacksonville	100-012	Jacksonville	100-012
K	Knoxville	100-012	Knoxville	100-012	Knoxville	100-012
L	Lynchburg	100-012	Lynchburg	100-012	Lynchburg	100-012
M	Maryland	100-012	Maryland	100-012	Maryland	100-012
N	Norfolk	100-012	Norfolk	100-012	Norfolk	100-012
O	Oak Ridge	100-012	Oak Ridge	100-012	Oak Ridge	100-012
P	Parkville	100-012	Parkville	100-012	Parkville	100-012
Q	Queen City	100-012	Queen City	100-012	Queen City	100-012
R	Riverdale	100-012	Riverdale	100-012	Riverdale	100-012
S	St. Louis	100-012	St. Louis	100-012	St. Louis	100-012
T	Trenton	100-012	Trenton	100-012	Trenton	100-012
U	Union City	100-012	Union City	100-012	Union City	100-012
V	Vicksburg	100-012	Vicksburg	100-012	Vicksburg	100-012
W	Washington	100-012	Washington	100-012	Washington	100-012
X	Xenia	100-012	Xenia	100-012	Xenia	100-012
Y	York	100-012	York	100-012	York	100-012
Z	Zanesville	100-012	Zanesville	100-012	Zanesville	100-012

Each city, town, or village shown in the above index can be located on the map by using the two numbers (coordinates) shown in the index. The first number shows the latitude and the second number shows the longitude. These numbers (coordinates) will apply to any map regardless of scale used, with the State grid system (and lines) being projected.



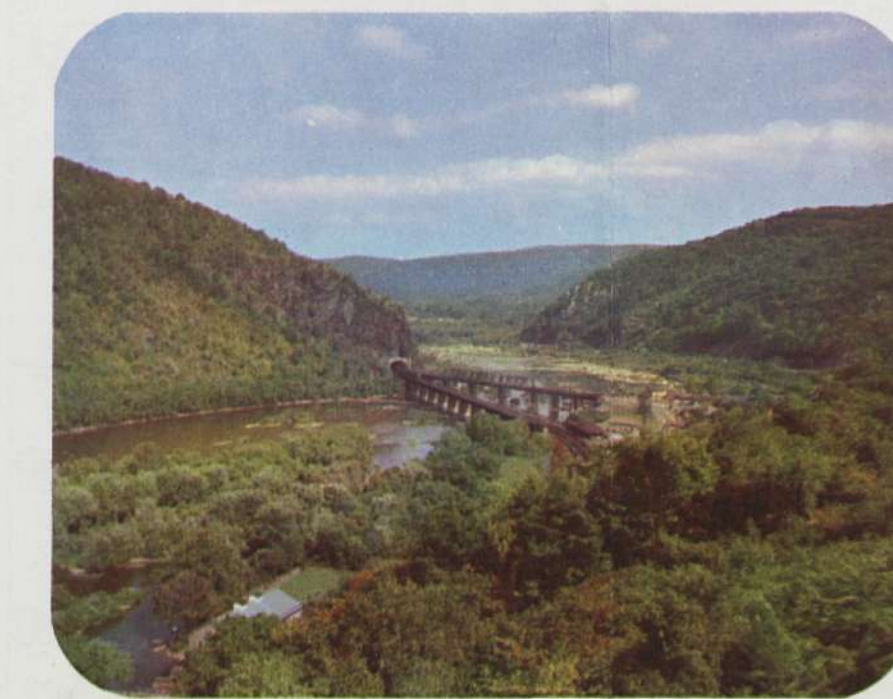
Skiing enthusiasts in Garrett County take time out at Marsh Mountain warm-up shack.



The blue Potomac winds through rolling countryside, dividing Maryland from West Virginia.



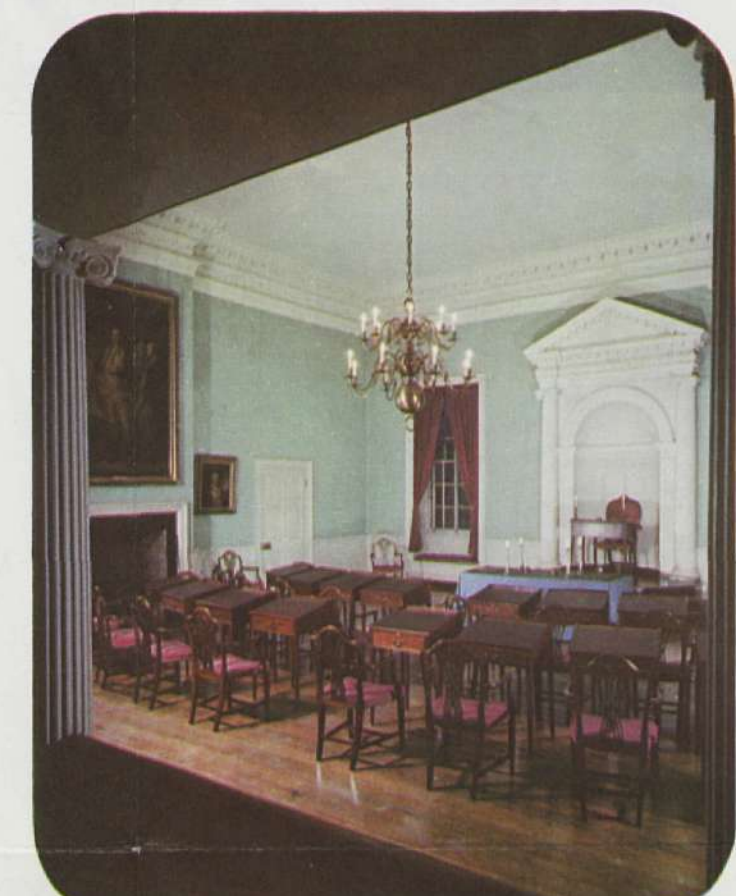
Maryland's many fine expressways are well-marked for motorists' convenience.



Three states and two rivers converge at Harpers Ferry, a tourists' mecca in Western Maryland.



Maryland is the home of some of the world's finest fishing.



The old Senate Chamber in Maryland's historic State House. Here George Washington resigned his commission as Commander-in-Chief of the Continental Forces.



Downtown Baltimore's Skyline as seen from its famous port.



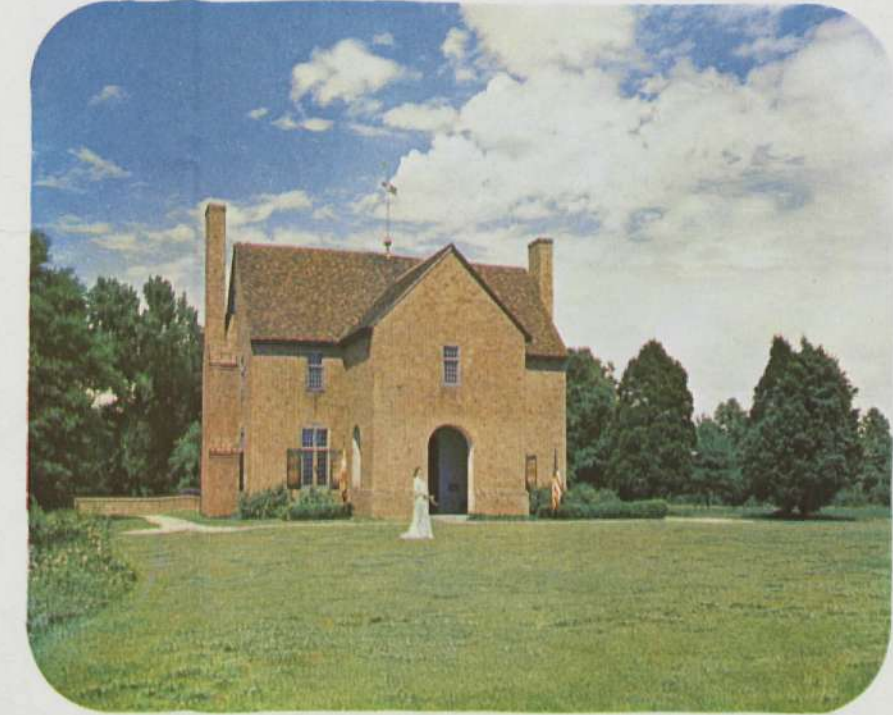
Baltimore's Fort M'Henry, birthplace of "The Star-Spangled Banner".



A picturesque lock on the long-abandoned Chesapeake and Ohio Canal.



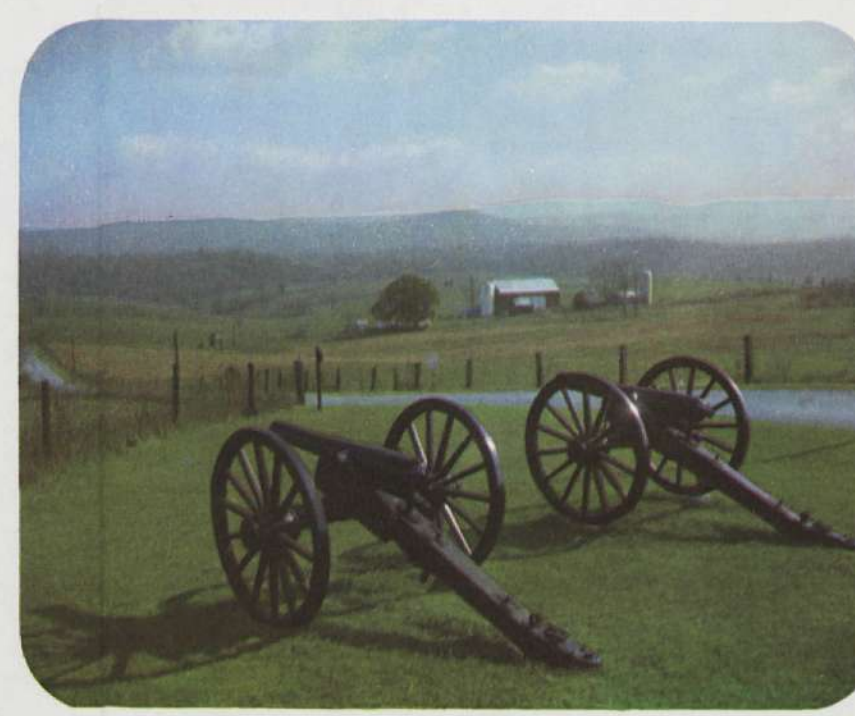
Typical picnic area and fishing pond for motorists.



Cradle of Religious Freedom. Replica of Maryland's first State House at St. Mary's City.



Atlantic seaboard traffic is finding Baltimore's new Tunnel Thruway a speedy bypass of city streets.



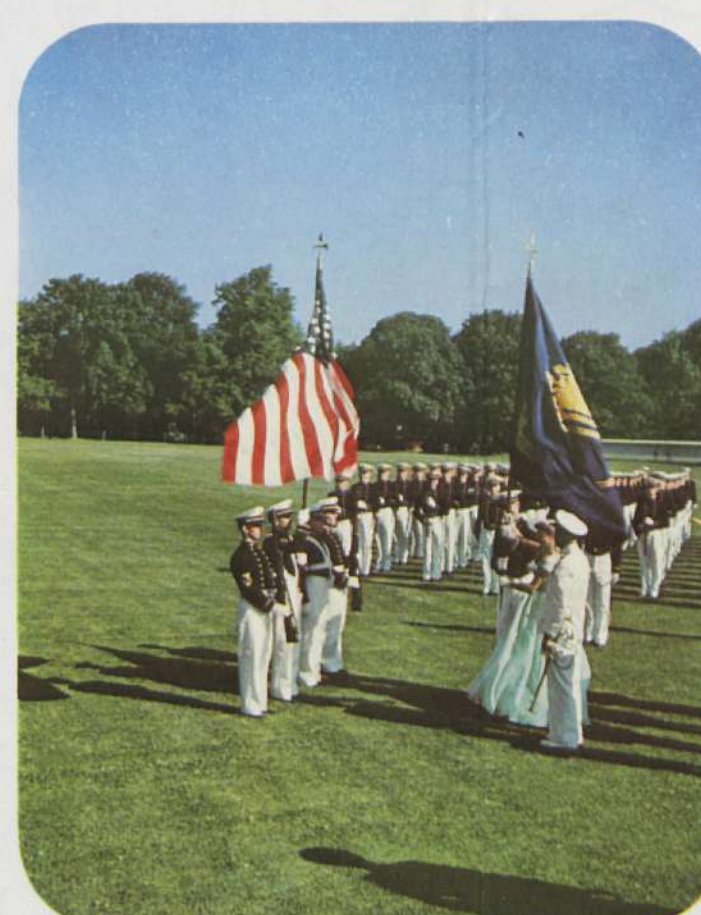
Antietam Battlefield, Washington County, a grim reminder of "The War Between The States".



The gracefully curving Chesapeake Bay Bridge is one of the wonders of modern engineering.



Baltimore's Stadium is the home of the World's Champion Colts and the American League's Orioles.



Colorful "June Week" ceremonies United States Naval Academy, Annapolis, Maryland.



Baltimore's Friendship International Airport. One of the most modern and complete facilities in the world.



The Beach at Ocean City is one of America's finest.



Maryland's courteous State Police are on duty around the clock to render assistance to motorists.