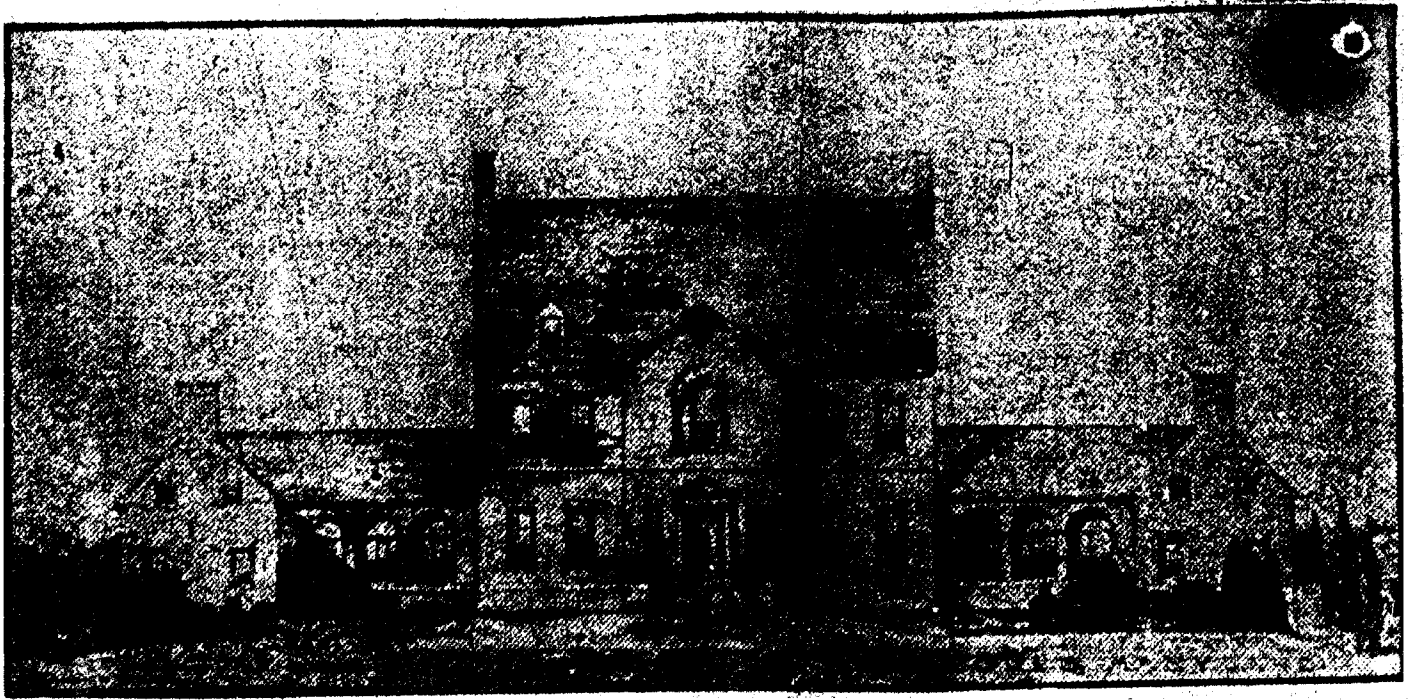


# Colonial Motif Will Feature Renovated Governor's Mansion



## NEW PLAN FOR REMODELING GOVERNOR'S MANSION

The dancing feet of youth, the soft color of old ivory and bright flowers, together with the graciousness of colonial days will change the renovated Governor's Mansion, when plans of Mrs. Harry W. Nice, wife of the Governor, are carried to completion.

The feeling of oppression that goes with the dark painted woodwork and dull finished walls of the mid-victorian era will be gone. In its stead will be the sunniness of wide windows, unfettered by heavy curtains, and the brightness of white and ivory paint.

### Work Starts In June

The victorian mansion will begin having her face lifted in the early part of June. Things will be done to her lines that will transform her from a dowdy victorian dame of advancing years, to a simple graceful thing embodying the charm of colonial days.

First the uninspiring grounds will be changed. There will be a formal garden to the west of the house, giving off the new ball room. Then sick trees, condemned to death by horticulturists of the University of Maryland, will have been removed and healthy young trees planted in their stead.

### Trees Are Dead

The parting with the trees was the hardest thing Mrs. Nice had to do, she said. But when experts told her that they were in imminent danger of blowing down with the first strong wind and that they would be wholly dead in two years anyway, she consented to their removal.

The present driveway will be torn up and flowers, shrubbery and grass planted there. A new drive will be constructed at the northeast side of the building to give a private entrance to the main portion of the house and also to the new office of the Governor.

quire cutting down the size of the present billiard room, but this can be done without lessening the usefulness of this room, Mrs. Nice said.

### Plans For 40 Rooms

The three floors alone will have forty rooms counting the baths and pantries. Nothing is planned for the top story of the house as yet, Mrs. Nice said, as they did not think they had sufficient money for this.

It could easily be taken care of in later years, she said.

Mrs. Nice has been interviewing decorators, who will be asked to bid on the work, for the past several weeks. They come singly and for each firm that wishes to bid on the work she has to go into details as to her planned designs again.

It is expected that the work will be completed in four months.

The Governor's office will occupy the northeast wing of the new house, with its end wall abutting on Bladen street. It will be connected with the house with a bright hallway that will be more of a sunporch or small conservatory.

### Have State Ballroom

The state ball room will occupy the opposite wing and it will be connected with the house with another sun parlor. The windows of the ballroom will open on the formal garden.

The room used at present as an office by the Governor will be re-decorated and transformed into a private reception room. The small reception room on the other side of the house and the drawing room back of it, will remain as now except the passage to the ballroom will open off the small reception room.

Underneath the ballroom will be a working conservatory and on the opposite wing, underneath the Governor's office will be a garage for the Mansion cars.

### Paint Dining Room Walls

The bay window effect of the drawing room will remain, as it will prove too expensive to change it, but the bay window in the State dining room will be taken out. The walls of the dining room will be painted with Maryland historical scenes.

The entire house will be re-decorated and painted in old ivory and white. Bright colors will supply the entire motif.

The Heppetwhite furniture in the main floor rooms will be retained, but the victorian bedroom fittings will be discarded and copies of furniture of the colonial period substituted.

### Two Cloak Rooms

An entrance from the driveway will be constructed downstairs, on the ground floor and it is planned to build two cloak rooms on each side of this entrance for the benefit of guests at State receptions.

An inside stairway will lead the guests upstairs instead of depending on the temporary outside stair now necessary.

On the ground floor will be the servants quarters, laundry, kitchen and store room as at present.

On the third floor will be installed three additional bathrooms, convenient to each of the two rooms. At present there are but two bathrooms, at the back of the house and the entire length of the building from the Governor's apartments.

### Put In Girders

It is planned to strengthen the masonry structure with steel girders. The installation of the additional girders on the third story will re-