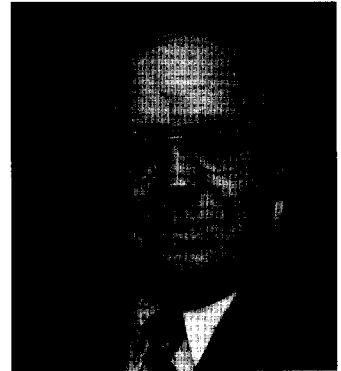


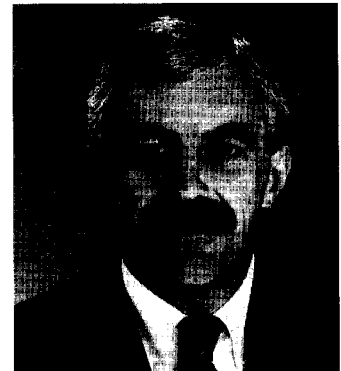
**JOHN A. CADE**, Republican, District 33, Anne Arundel County. Member, Senate since 1975. Minority Leader. Member, Budget and Taxation Committee (health, education & human resources subcomm.; capital budget subcomm.; revenues & taxes subcomm.). Member, Rules Committee; Legislative Policy Committee (management subcomm.); Spending Affordability Committee; Special Joint Committee on Economic Development Strategy; Joint Expenditure Study Group on Education and Human Resources; Joint Subcommittee on State's Capital Program. Senate Chair, Special Joint Committee on Legislative Data Systems. *Born in Charleston, South Carolina, July 2, 1929. Attended Kentucky & Ohio parochial schools. Served in U.S. Marine Corps, 1946-48, 1950-51. Xavier University, B.S., 1953; Northwestern University, M.B.A., 1954; 2 years law school-Chase College and University of Maryland. Professional business & real estate consultant. Graduate of Realtor's Institute (G.R.I.). Member, Anne Arundel County Charter Board, 1962-63; Anne Arundel County Council, 1965-70. Member, Maryland Commission on the Capital City, 1975-83; Task Force to Study the Funding of Public Education, 1983-84; Maryland Historical Trust, 1985-92; Task Force to Study Independent Salary-Setting Authorities, 1985-86; Fiscal Review Committee, 1986; Special Committee on the Port of Baltimore, 1987; Governor's Transportation Revenue Committee, 1990-91. Delegate, Republican Party National Convention, 1988. Distinguished Service Award, Glen Burnie Jaycees, 1963. Married. Annapolis office: 407 James Senate Office Bldg., 21401-1991; tel. (410) 841-3568.*



**MICHAEL J. COLLINS**, Democrat, District 6, Baltimore County. Member, House of Delegates, 1978-86. Member of Senate since December 1986; Economic and Environmental Affairs Committee (education subcomm.; health subcomm.; chair, ethics & elections subcomm.); Joint Committee on Legislative Ethics; Joint Committee on Federal Relations. Senate Chair, Joint Committee on Investigation. *Born in Scranton, Pennsylvania, July 24, 1940. Scranton Central High School; University of Scranton, B.S., 1962; The Johns Hopkins University, M.L.A., 1966; Essex Community College; Loyola College. Educator. Member, Controlled Hazardous Substances Task Force, 1992—. Member, Essex Development Corp.; Essex-Middle River Chamber of Commerce; Bird River Democratic & Civic Club; Riverside Democratic Club; Middle River Democratic & Civic Club; Bengies-Chase Democratic Club; 15th District Democratic Club; Deep Creek Democratic Club & Civic Assoc.; Knights of Columbus Council 2452. Outstanding Contributions to Education Award, Teachers Assoc. of Baltimore County, 1975; Man of the Year, Essex Community College, 1985; Elected Official of the Year, Young Democrats, 1986; Legislator of the Year, Md. Psychological Assoc., 1988; Walter G. Wells Award for Outstanding Contributions to Preserving the Environment, Potomac Chapter, Sierra Club, 1988. Member, St. Clare's Parish Council (past pres.); Holy Name Society. District office: 418 Eastern Blvd., Baltimore 21221; tel. (410) 391-7800. Annapolis office: 211 James Senate Office Bldg., 21401-1991; tel. (410) 841-3642.*



**GEORGE W. DELLA, JR.**, Democrat, District 47, Baltimore City. Member of Senate since 1983. Member, Finance Committee; Executive Nominations Committee; Joint Committee on the Management of Public Funds; Joint Expenditure Study Group on Law Enforcement and Transportation. Member, Tort and Insurance Reform Oversight Committee, 1988-93; Special Joint Committee on Energy Pricing, 1990-91. *Born in Baltimore, Maryland, June 5, 1943. Gilman School; Southern High School; University of Baltimore; University of Baltimore School of Law, J.D., 1972. Served in Maryland National Guard, 1965-71. Member, Baltimore City Hospital Nursing Home Study Commission, appointed 1976. Member, Baltimore City Council, 1976-83 (chair, budget & finance committee, 1979-83). Member, Workmen's Compensation Study Committee; Mayor's Insurance Study Committee, Baltimore City. Member, Stonewall Democratic Club; 19th Ward Democratic Club; Baybrook Democratic Club. Member, Corinthian Lodge No. 93, A.F. & A.M.; Druid R.A. Chapter No. 28; Monumental Commanders No. 3, Knights Templar; Hiram Council No. 5, R. & S.M.; Boumi Temple A.A.O.N.M.S. District office: 801 Light St., Baltimore 21230; tel. (410) 244-8400. Annapolis office: 207 James Senate Office Bldg., 21401-1991; tel. (410) 841-3600.*



**HOWARD A. DENIS**, Republican, District 16, Montgomery County. Member of Senate since 1977. Member, Finance Committee, 1993—; Executive Nominations Committee; Joint Committee on Administrative, Executive and Legislative Review; Joint Committee on Legislative Ethics. Former member, Judicial Proceedings Committee. *Born November 21, 1939. Bethesda-Chevy Chase High School, 1957; Georgetown College, A.B., 1961; Georgetown Law Center, LL.B., 1965. Member, Governor's Commission on Mentally Retarded Persons in the Criminal Justice System, 1978-80; Advisory Board on Liability, 1980-82; Governor's Commission on Condominiums, Cooperatives and Homeowners Associations, 1982-86; Task Force on Documents, 1984-85; Commission on Health Insurance Pooling Mechanisms, 1985-86; Task Force to Study the Funding of Special Education, 1985-86; Governor's Council on Adolescent Pregnancy, 1986-89; Maryland Civil War Heritage Commission, 1992—. Delegate, Republican Party National Convention, 1988, 1992. Married to the former Babette Wise; one daughter. Annapolis office: 402-B James Senate Office Bldg., 21401-1991; tel. (301) 858-3124, (410) 841-3124.*

