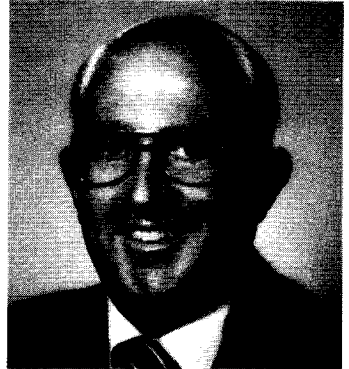


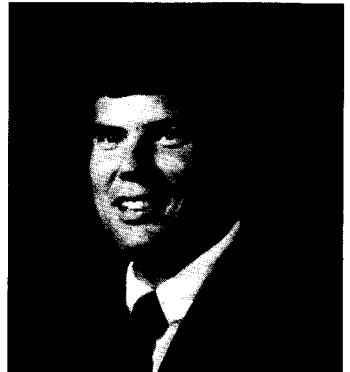
**EDWARD P. THOMAS**, Republican, District 3. Born in Frederick, August 3, 1928. Attended Frederick public schools; Mercersburg, Pennsylvania, Academy; Washington and Lee University, B.A., 1950. Businessman. Served in the U.S. Army, 1950-1952. Chairman, Republican State Central Committee of Maryland, 1973-1974. Chairman, Frederick County Republican State Central Committee, 1966-1970. Member, Frederick Eagles; Lions; Frederick Catoctin Club; Frederick Touchdown Club. Secretary-treasurer, Maryland State BPA; chairman, BPAA Legislative Committee. Member, Frederick Cotillion Club; Frederick County Farm Bureau; Loyal Order of Moose; B.P.O. Elks; American Legion; AMVETS; V.F.W.; Board of Visitors, Maryland School for the Deaf. Married; four children. Member of the Senate since 1971. Minority Whip, 1982; Minority Leader, 1983—. Served on Judicial Proceedings Committee; Economic Affairs Committee; Joint Committee on Corrections; Executive Nominations Committee; Protocol Committee; numerous gubernatorial commissions and task forces. District office: 10 W. College Terr., Frederick 21701; tel. 662-0713. Annapolis office: 410 James Bldg., 21401; tel. 841-3575.



**MICHAEL J. WAGNER**, Democrat, District 32. Born in Baltimore, October 20, 1941. Attended Glen Burnie Senior High; University of Baltimore, A.A., 1966. President, H & M Wagner & Sons, Inc. (food and restaurant supplies). Justice of the peace, Anne Arundel County, 1963-1964; committing magistrate, Anne Arundel County, 1965-1966. Member, Masons; Elks; Moose; Linthicum-Ferndale Youth Athletic Association; Greater Ferndale Improvement Association; Ferndale-Linthicum Area Community Council (organizer and founder, 1975); Andover Sport Boosters; Glen Burnie Chamber of Commerce; Anne Arundel Trade Council; Wagner Baseball, Inc. (founder and Board of Directors, 1977—). Voted Outstanding Young Man, 1975, Glen Burnie Jaycees. Married; 2 children. Member of the House of Delegates, 1975-1977. Member of the Senate, 1977-1979 and since 1983. Member, Judicial Proceedings Committee. District office: 241 Wicklow Ave., Glen Burnie 21061; tel. 761-6335. Annapolis office: 314 James Bldg., 21401; tel. 841-3593.



**GERALD W. WINEGRAD**, Democrat, District 30. Born in Baltimore, September 9, 1944. Western Maryland College, B.A., 1966; University of Maryland Law School, J.D., 1969. Attorney. Counsel to the National Wildlife Federation, Washington, D.C., 1969-1970. U.S. Navy Judge Advocate's General Corps, 1970-1974, Military Judge. Commander in Naval Reserve. Member, Annapolis Optimist Club; Fleet Reserve Association #24; American Legion Post 226; Military Order of World Wars; State Water Quality Advisory Committee; State Development Task Force; South County, Eastport, and Greater Annapolis Democratic Clubs. Selected Outstanding Young Annapolitan, 1976; Conservation Legislator of the Year 1981 by the Maryland Wildlife Federation; Legislator of the Year 1982 by Solar Action of Maryland; Legislator of the Year 1981 by the Anne Arundel County Psychological Assn.; cited for legislative work by Maryland Recreation and Parks Assn., 1980. Married; 3 daughters. Member of the House of Delegates, 1978-1983. Member of the Senate since 1983. Member, Constitutional and Public Law Committee. District and Annapolis office: 401 James Bldg., Annapolis 21401; tel. 841-3578.



**THOMAS M. YEAGER**, Democrat, District 13. Born September 27, 1936. University of Maryland, B.S.E.E., 1963; American University, M.B.A., 1969. District sales manager, Hewlett Packard. Served in U.S. Air Force, 1954-1957. Member, Howard County Council, 1974-1982. Past president, University of Maryland Howard County Alumni Association. Member, Clarksville Lions; Howard County Striders; Howard County Bee Keepers Association; Terrapin Club; American Legion Post 60, Laurel. Married; 2 children. Member of the Senate since 1983. Member, Judicial Proceedings Committee. District office: 7437 Cherry Tree Dr., Fulton 20759; tel. 725-6957. Annapolis office: 404 James Bldg., 21401; tel. 841-3572.

