

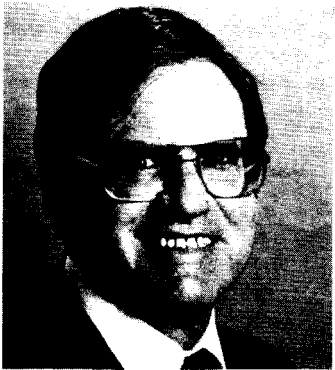
SIDNEY KRAMER, Democrat, District 19. Born in Washington, D.C., July 8, 1925. Attended Washington, D.C., public schools; George Washington University. Member, Montgomery County Council, 1970-1974 (vice-president, 1974); Montgomery County representative to Region IV Board of Governor's Commission on Law Enforcement and the Administration of Justice, 1971-1974; chairman, Public Safety Policy Committee, Metropolitan Washington Council of Governments. Formerly vice-chairman, Executive Committee, Montgomery United Way; president, Montgomery Chamber of Commerce; director-at-large, Maryland Association for Retarded Citizens; member, board of trustees, Holy Cross Hospital; president, Rotary Club of Silver Spring; chairman, Maryland Building Code Study Commission. Member, Governor's Commission on Workmen's Compensation Laws; Advisory Board on Liability. Member of the Senate since 1978. Member, Constitutional and Public Law Committee; Executive Nominations Committee; chairman, Montgomery County Senate delegation. District office: 11500 Gilsan St., Silver Spring 20902; tel. 593-4525. Annapolis office: 212 James Bldg., 21401; tel. 841-3151.



JULIAN L. LAPIDES, Democrat, District 44. Born in Baltimore, September 17, 1931. Attended Baltimore public schools; The Johns Hopkins University; Towson State College, B.S., 1954; University of Maryland Law School, LL.B., 1961. Admitted to Maryland Bar, 1965. Served with U.S. Army, 1954-1956. Member, Maryland Arts Council; Commission on Hereditary Disorders. President, Mount Royal Democratic Club. Member, American Antiquarian Society; The Peale Museum; Baltimore Museum of Art; Walters Art Gallery; Victorian Society in America. Board member, Society for the Preservation of Maryland Antiquities; Lillie Carroll Jackson Museum. Past president, Maryland Kidney Foundation; regional vice-president, National Kidney Foundation, 1970-1972. Married. Member of the House of Delegates, 1963-1967. Member of the Senate since 1967. Member, Budget and Taxation Committee; Joint Committee on Budget and Audit; Commission on Intergovernmental Cooperation; Special Joint Committee on Energy; Maryland State Planning Commission. Co-chairman, Joint Committee on Legislative Ethics. District office: 809 Cathedral St., Baltimore, 21201; tel. 752-4519. Annapolis office: 116 Pres. Wing, James Bldg., 21401; tel. 841-3686.



LAURENCE LEVITAN, Democrat, District 15. Born in Washington, D.C., October 22, 1933. Attended Washington, D.C., public schools; Washington and Lee University, B.S., 1955; George Washington Law School, J.D., 1958. Admitted to Maryland Bar, 1964. Past officer and director, Regency Estates Citizens Association; past president and trustee, Georgetown Hill Elementary School PTA. Officer and director, Montgomery County Heart Association. Member and past chairman, Joint Committee on Management of Public Funds. Member, Governor's Commission to Study School Construction Programs; Fiscal Affairs Committee, Southern Legislative Conference; Fiscal Affairs and Oversight Committee, National Conference of State Legislatures; Special Committee to Finance Agricultural Land Preservation; Joint Legislative Committee on Port of Baltimore. Member, Commission on Condominiums; Commission on Compensation and Personnel Policies; Maryland Committee on Federal Income Tax Conformity. Married. Member of the House of Delegates, 1971-1974. Member of the Senate since 1975. Chairman, Budget and Taxation Committee, 1979-. Member, Legislative Policy Committee; Budget and Audit Committee; Joint Oversight Committee on Transportation; chairman, Spending Affordability Committee. District office: 11426 Georgetowne Dr., Potomac 20854; tel. 229-6561. Annapolis office: 100 James Bldg., 21401; tel. 841-3169.



JOSEPH J. LONG, SR., Democrat, District 38. Born in Delmar, July 19, 1921. Attended public schools in Salisbury and Delmar; Paynter Business School. Electrician. Served with the U.S. Air Force, 1942-1946. Member, Salisbury City Council, 1958-1962. Member, Governor's Commission to Study Public Employee Labor Relations; Governor's Commission to Study the Revision of the Child Labor Laws; Governor's Advisory Committee on Elevators. Vice-chairman, Joint Committee to Study the State Economy. President, Young Democratic Club of Wicomico County, 1960-1961. Member, Democratic Club of Wicomico County; Assateague Democratic Club; Salisbury Democratic Committee. Member, International Association of Electrical Inspectors; Farm Bureau; Moose; American Legion. Member, Bi-State Chesapeake Bay Commission. Married. Member of the House of Delegates, 1963-1978. Chairman, Wicomico County Delegation, 1967-1978. Chairman, Subcommittee on Labor and Management of Economic Matters Committee, 1968-1978. Chairman, Joint Governor's Commission on Study of Mobile Homes, 1976-1981. Member of the Senate since 1979. Member, Constitutional and Public Law Committee since 1979. District office: 730 S. Park Drive, Salisbury 21801; tel. 742-9032. Annapolis office: 206 James Bldg. 21401; tel. 841-3645.

