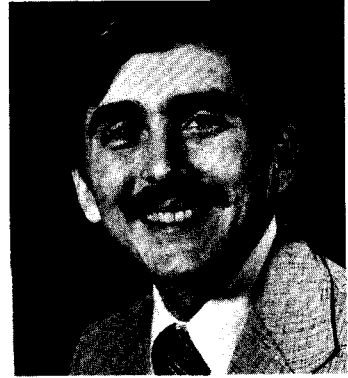
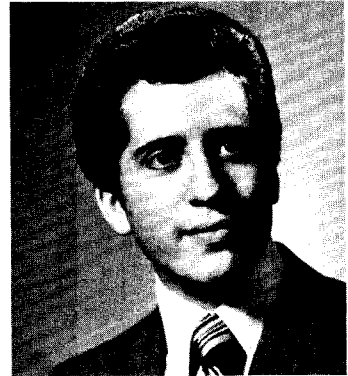


**WALTER J. SHANDROWSKY**, Democrat, District 31. Born in Baltimore, September 12, 1948. Attended Cardinal Gibbons High School; University of Baltimore, B.S., 1976. Served in the U.S. Army; received Air Medal with 24 Oak Leaf Clusters; Army Aviator Badge; Air Medal with V-Device; Vietnam Service Medal; Vietnam Campaign Medal, and other service medals. Member, board of directors, Riviera Beach Volunteer Fire Company, Inc. Married; 2 children. Member of the House of Delegates since 1979. District office: 7615 Bay St., Pasadena 21122; tel. 437-1530. Annapolis office: 213 Lowe Bldg., 21401; tel. 841-3217.



**DAVID B. SHAPIRO**, Democrat, District 42. Born in Baltimore, November 13, 1955. Attended Northwestern High School; Baltimore Hebrew College; University of Maryland, Baltimore County Campus, B.A., Economics and Accounting, 1976; University of Baltimore School of Law, J.D., 1982. Administrator and accountant. Member, Governor's Youth Advisory Council, 1974—; Jefferson Lodge, Independent Order of Oddfellows, 1979; Baltimore Jaycees, 1979; Board of Directors, Baltimore Jewish Community Center, 1973-1974, 1976—; founder and director, Project Bernfes; Board of Directors, Jewish Big Brother League of Baltimore, 1975; president, John F. Kennedy Chapter, B'nai B'rith Youth Organization, 1973; member, National Association of Jewish Legislators, 1978. Instructor, UMBC, 1977; Yavneh Holocaust Tour, 1975. Unmarried. Member of the House of Delegates since 1977. District office: 3102 Shelburne Rd., Baltimore 21208; tel. 358-5055. Annapolis office: 320 Lowe Bldg., 21401; tel. 841-3297.



**LORRAINE M. SHEEHAN**, Democrat, District 26. Born in Manchester, N.H., May 2, 1937. Member, League of Women Voters; Business and Professional Women's Club; PTA; Marlboro Democratic Club; Kettering Civic Federation; member, board of trustees, Greater Southeast Community Hospital Foundation; Greater Southeast Center for Aging; board member, Suitland Local Development Corporation. Member of the House of Delegates since 1974. Vice-chairperson, Prince George's County Delegation; member, Ways and Means Committee; Subcommittee on Education of the Task Force to Study State/Local Fiscal Relationships; Humane Practices Commission; Chairperson, Health Care Subcommittee; member, Medical Assistance Program. District office: Oakcrest Towers, 2020 Brooks Drive, Suite 119, Suitland 20028; tel. 420-5858. Annapolis office: 205 Lowe Bldg., 21401; tel. 841-3076.



**PATRICIA R. SHER**, Democrat, District 18. Born in Washington, D.C., June 19, 1931. Attended Greenbelt High School; liberal arts student at Montgomery Community College, 1967-1971; part-time student, University of Maryland, 1976—. Friends of RAP, founder and secretary, 1971, member, 1971-1978; charter member, Montgomery County Women's Political Caucus (member, Constitution and By-Laws Committee); Montgomery County Coordinator, Committee to Repeal Blue Laws, 1976; president, EMKW Democratic Club, 1977-1978; Democratic Precinct Chairperson, 1966-1978; vice-president, Tifereth Sisterhood. Married to William Sher; 4 children. Member of the House of Delegates since 1979. Member, Economic Matters Committee; Joint Committee on Corrections; Joint Committee on Insurance; Task Force to Study Hospital Regulations; Plain Language Task Force; Council of Governments Policy Committee on Public Safety; Product Liability Study. District office: 1916 Rookwood Rd., Silver Spring 20910; tel. 589-7188. Annapolis office: 224 Lowe Bldg., 21401; tel. 841-3028.

