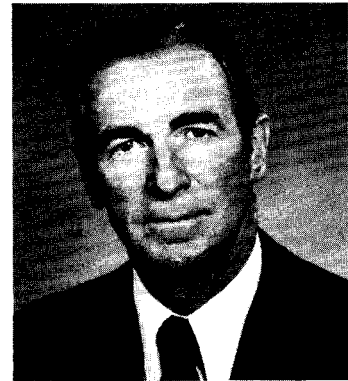


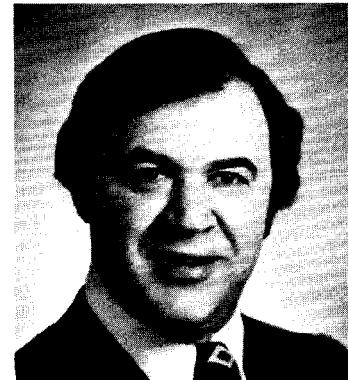
JAMES C. SIMPSON, Democrat, District 29. Born in Washington, D.C., May 14, 1931. Attended Washington, D.C., public schools. President of distribution company. Served in the U.S. Marine Corps, 1951 - 1954. Chairman, Charles County Sanitary Commission, 1967 - 1970; president, Board of County Commissioners of Charles County, 1970 - 1974. Member, Governor's Commission to Study Land Use, 1973. Past president, Waldorf Lions Club. Past deputy district governor, Lions Club. Honorary member, Waldorf Jaycees. Member, American Legion; Knights of Columbus; Optimist Club; Elks; Izaak Walton League; Charles County Chamber of Commerce. Selected Citizen of the Year by Waldorf Lions Club, 1974. Director, Maryland Bank & Trust Company and Maryland Capital Savings & Loan Association. Member, Senate Finance Committee, Patuxent River Advisory Committee and Maryland-Virginia Legislative Advisory Committee on the Chesapeake Bay. District office: P.O. Box 188, Waldorf 20601; tel. 645-2235. Annapolis office: 316 James Bldg., 21401; tel. 269-3780.



CHARLES H. SMELSER, Democrat, District 4. Born in Uniontown, Carroll County, July 4, 1920. Attended Carroll County public schools; University of Maryland, B.S., 1942. Dairy farmer and real estate broker. Served with the U.S. Air Force in World War II. Member, Frederick County Farm Bureau. Past president, Capitol Milk Producers Cooperative, Inc. Director, New Windsor State Bank. Member, Elks. Past president, Libertytown-Unionville Lions Club. Married. Member of the House of Delegates, 1955 - 1963. Member, Legislative Council, 1959 - 1960; Maryland Hospital Commission, 1963 - 1967. Member of the Senate since 1967. District office: Route 2, Union Bridge 21791; tel. 848-2770. Annapolis office: 100 James Bldg., 21401; tel. 269-3991.



MELVIN A. STEINBERG, Democrat, District 12. Born in Baltimore, October 4, 1933. Attended Baltimore public schools; University of Baltimore; University of Baltimore Law School, J.D., 1955. Admitted to the Maryland Bar, 1955. Served with the U.S. Navy, 1952 - 1957. Member, Drug Abuse Advisory Council; Task Force to Study Campaign Financing. Chairman, Committee on Family Law and Domestic Relations. Member, B'nai B'rith; Junior Chamber of Commerce; Safety Traffic Club of Maryland; American Judicature Society; American and Baltimore Bar Associations; Masons; Golden Eagle Square and Compass Club of Maryland; Yedz Grotto; Greenspring Valley Synagogue. President, Baltimore Association for Histadrut. Member, National Society of State Legislators. Married. Member of the Senate since 1967. Chairman, Joint Committee on Ethics; vice-chairman, Judicial Proceedings Committee. Chairman, Finance Committee since 1979. District office: 305 W. Chesapeake Ave., Suite 507, Towson 21204; tel. 821-5516. Annapolis office: Pres. Wing, James Bldg., 21401; tel. 269-3747.



NORMAN R. STONE, JR., Democrat, District 9. Born in Baltimore, September 8, 1935. Attended Baltimore public schools; University of Baltimore; University of Baltimore Law School, LL.B., 1960. Admitted to the Maryland Bar, 1960. Member, Governor's Study Commission on Workmen's Compensation Laws. Past president, North Point Improvement Association; past president St. Luke's Holy Name Society; Advocate Beth Council Knights of Columbus. Member, Moose; North Point Peninsula Community Coordinating Council. Member of House of Delegates, 1963 - 1967. Member of Senate since 1967. Chairman, Legislative Review Committee. Chairman and vice-chairman, Administrative, Executive and Legislative Review Committee. Vice-chairman, Constitutional and Public Law Committee, 1975 - 1978. Chairman, Baltimore County Senate Delegation, 1968 - 1972. District office: 2322 Lodge Forest Dr., Baltimore 21219; tel. 288-5270. Annapolis office: 402 James Bldg., 21401; tel. 269-3867.

