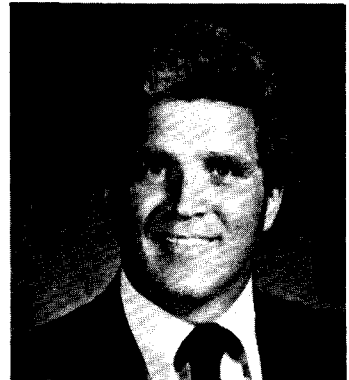


HARRY J. McGUIRK, Democrat, District 37. Born in Baltimore, November 7, 1923. Attended Baltimore public schools, University of Maryland; Cornell University. Real estate broker and consultant. Served four years in U.S. Navy. Chairman, Rent Advisory Board; Zoning Study Commission. Past Exalted Ruler, Baltimore Lodge No. 7, B.P.O.E. Past Commander, Walbrook Post No. 118, American Legion. Member of the House of Delegates, 1960 - 1967. Member of Maryland Senate since 1967. Chairman, Economic Affairs Committee since 1974. West Baltimore Business Men's Association "Man of the Year" Award, 1968. Legislator of the Year, 1976. Veteran Legislator of the Year, 1977. Member of Executive Board of the Southern Conference of Council of State Government. Former chairman of Transportation Committee of Council of State Government. District office: 908 Frederick Rd., Baltimore 21228; tel. 788-7101. Annapolis office: 201 James Bldg., 21401; tel. 269-3296.



THOMAS V. MIKE MILLER, JR., Democrat, District 28. Born in Clinton, December 3, 1943. Attended Prince George's County public schools; University of Maryland, B.S., 1964; University of Maryland School of Law, LL.B., J.D., 1967. Admitted to the Maryland Bar, 1967. Member, American, Maryland State and Prince George's County Bar Associations; Surratts, Brandywine, and Fort Washington Democratic Clubs. Member, Judicial Proceedings Committee; Administrative, Executive and Legislative Review Committee; Governor's Commission on Domestic Relations Laws; Maryland Historical Trust. Director, Bank of Brandywine; past officer, Clinton Dads' Club; Southern Prince George's County Board of Trade; Clinton-Camp Springs Co-op. Married, 5 children. Member of the House of Delegates, 1971 - 1975. Member of the Senate since 1975. District office: 8808 Old Branch Ave., Clinton 20735; tel. 868-6931. Annapolis office: 313 James Bldg., 21401; tel. 269-3891.



CLARENCE M. MITCHELL III, Democrat, District 38. Born in St. Paul, Minn., December 14, 1939. Attended Baltimore public schools; Gonzaga High School, Washington, D.C.; University of Maryland; Morgan State University; University of Baltimore Law School. Mortgage banker, real estate broker, and consultant. Former member, Young Democrats of Maryland; Baltimore Junior Chamber of Commerce. Member, Y.M.C.A.; NAACP; Kappa Alpha Psi; Urban League; Prince Hall Masons; and other civic and fraternal organizations. Two children, Clarence Mitchell IV and Lisa Mitchell. Recipient of many awards for outstanding leadership and citizenship from government, private industry, and community groups. Member of the House of Delegates, 1963 - 1967. Member of the Senate since 1967 (Deputy Majority Leader, 1975 - 1978; Majority Whip, 1979). District office: 1239 Druid Hill Ave., Baltimore 21217; tel. 523-4222. Annapolis office: 306 James Bldg., 21401; tel. 269-3035.



THOMAS PATRICK O'REILLY, Democrat, District 23. Born in New York, N.Y., September 2, 1938. Attended Washington, D.C., and Prince George's County parochial and public schools; University of Maryland, B.S. in Electrical Engineering, 1968; University of Maryland School of Law, J.D., 1972. Admitted to the Maryland Bar, 1972. Served in the U.S. Air Force, 1961 - 1964. Law clerk for Judge Robert B. Mathias, former Associate Judge, Circuit Court for Prince George's County. Member, American, Maryland State and Prince George's County Bar Associations; Maryland Trial Lawyers Association; American Legion; B.P.O.E.; Irish-American Club. Married. Member of the Senate since 1975. District office: 5707 East West Highway, Riverdale 20840; tel. 779-2700. Annapolis office: 209 James Bldg., 21401; tel. 269-3879.

