

269

Belair Road

105

Burgess Estate  
now

42
4

H. P. Quick

Survey in 1899

for M. A. Mullin

+ J. Geo. ~~Held~~ Vauld.

Burgan

Belair Road

Now G. P. Quick

Survey made in 1899 for

M. A. Mullin & J. Geo. Weald

---

Belair Road Box 1  
See plat - No 131-12 dist

1886  
1832

54

2045<sup>1</sup>

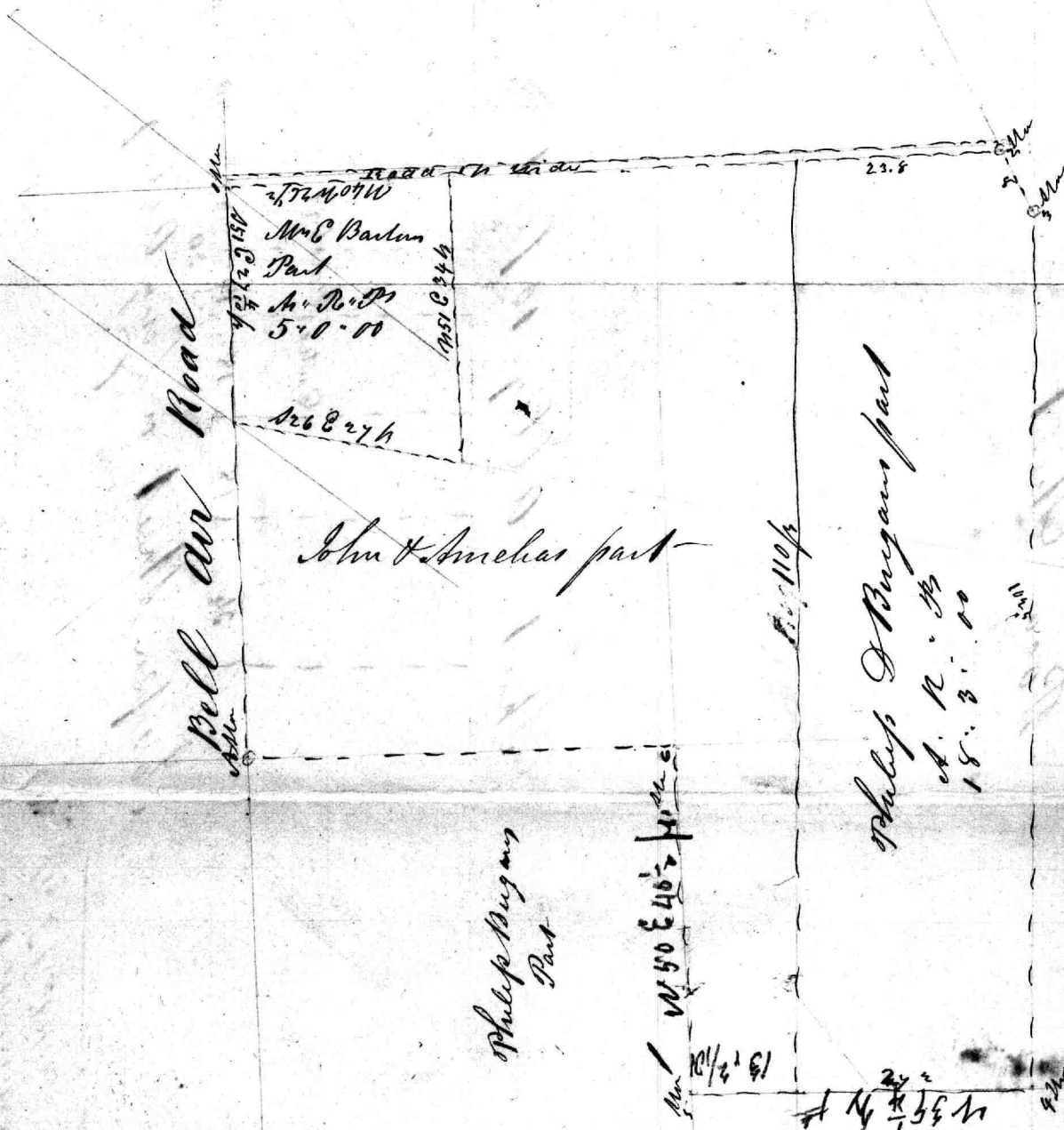


Rough Plot of  
Deborah Burgans  
Part as divided among  
her Children

---

66.3  
27.4  
39.1

Y.K. 347-6  
2d Rec



Mr D Buggans part for A

1 M30 C66 2/3  
2 M40 C90 1/3  
3 M40 C90 1/3  
4 M52 W102 1/3  
5 M39 1/2 W40 1/3  
6 M30 C40 1/3  
7 M39 1/2 W30 1/3  
8 M40 C40 1/3  
9 M40 C40 1/3  
10 M40 C40 1/3  
11 M40 C40 1/3  
12 M40 C40 1/3  
13 M40 C40 1/3  
14 M40 C40 1/3  
15 M40 C40 1/3  
16 M40 C40 1/3  
17 M40 C40 1/3  
18 M40 C40 1/3  
19 M40 C40 1/3  
20 M40 C40 1/3  
21 M40 C40 1/3  
22 M40 C40 1/3  
23 M40 C40 1/3  
24 M40 C40 1/3  
25 M40 C40 1/3  
26 M40 C40 1/3  
27 M40 C40 1/3  
28 M40 C40 1/3  
29 M40 C40 1/3  
30 M40 C40 1/3  
31 M40 C40 1/3  
32 M40 C40 1/3  
33 M40 C40 1/3  
34 M40 C40 1/3  
35 M40 C40 1/3  
36 M40 C40 1/3  
37 M40 C40 1/3  
38 M40 C40 1/3  
39 M40 C40 1/3  
40 M40 C40 1/3  
41 M40 C40 1/3  
42 M40 C40 1/3  
43 M40 C40 1/3  
44 M40 C40 1/3  
45 M40 C40 1/3  
46 M40 C40 1/3  
47 M40 C40 1/3  
48 M40 C40 1/3  
49 M40 C40 1/3  
50 M40 C40 1/3  
51 M40 C40 1/3  
52 M40 C40 1/3  
53 M40 C40 1/3  
54 M40 C40 1/3  
55 M40 C40 1/3  
56 M40 C40 1/3  
57 M40 C40 1/3  
58 M40 C40 1/3  
59 M40 C40 1/3  
60 M40 C40 1/3  
61 M40 C40 1/3  
62 M40 C40 1/3  
63 M40 C40 1/3  
64 M40 C40 1/3  
65 M40 C40 1/3  
66 M40 C40 1/3  
67 M40 C40 1/3  
68 M40 C40 1/3  
69 M40 C40 1/3  
70 M40 C40 1/3  
71 M40 C40 1/3  
72 M40 C40 1/3  
73 M40 C40 1/3  
74 M40 C40 1/3  
75 M40 C40 1/3  
76 M40 C40 1/3  
77 M40 C40 1/3  
78 M40 C40 1/3  
79 M40 C40 1/3  
80 M40 C40 1/3  
81 M40 C40 1/3  
82 M40 C40 1/3  
83 M40 C40 1/3  
84 M40 C40 1/3  
85 M40 C40 1/3  
86 M40 C40 1/3  
87 M40 C40 1/3  
88 M40 C40 1/3  
89 M40 C40 1/3  
90 M40 C40 1/3  
91 M40 C40 1/3  
92 M40 C40 1/3  
93 M40 C40 1/3  
94 M40 C40 1/3  
95 M40 C40 1/3  
96 M40 C40 1/3  
97 M40 C40 1/3  
98 M40 C40 1/3  
99 M40 C40 1/3  
100 M40 C40 1/3

34.4  
27.4  
61.8  
60.1  
26.3  
30.35  
36.42  
121.4  
160.855  
804.27

110  
47.2  
220  
160  
139.2  
1280  
12

160 / 14824 / 11

160 / 29648 / 18.2.4  
160  
1364  
1280  
84

109.4  
27.4  
218  
763  
218  
29648  
14824

Paca Sheet

Harvey

Shot alley 10 feet

Sheet

Outro Harveys

34 18 18 14 16 80

30

Aspen Street or Long Alley

18 1  
12 2  
12 2  
11 2  
53 6

51/177

247

55/84

43/110

23

44

John S. Bidston

Bel air road

near 5 mile

Box 2 N<sup>o</sup> 326

Corners and distances comprising a piece or  
parcel of land lying in Baltimore County in the  
State of Maryland

Beginning for same at a stone set at the end of  
1.910 ps in the N. 79.70-34 1/2 ps line of division between the  
land belonging to Eliz<sup>th</sup> Burgan, and land belonging  
to Philip Burgan and running thence bounding on  
part of said line N. 79.40-32.910 ps to a stone at the end  
of said line, thence running with and bounding on part  
of the S. 31.1/2 E 96.1/2 ps division line between lands belonging  
to the above named parties S. 31.1/2 E 25.310 ps to a stone set  
or to be set in said line, thence running a line drawn  
S. 70.20- from a stone set or to be set at the end of 11 ps  
in the S. 31.1/2 E 12 ps line of the land conveyed to John G.  
Biddison by John C. Blackburn, Trustee by deed  
bearing date the 11<sup>th</sup> of July AD 1870, E. H. A N<sup>o</sup> 69 folio  
226 &c, N. 70. E 36.210 ps to said last mentioned stone  
thence running and bounding <sup>part</sup> of the above mentioned  
S. 31.1/2 E 12 ps line, N. 31.1/2.20 6 ps to the place of begin-  
ning. Containing 3 acres, and 38 square perches  
of land more or less.

Being part of the land allotted to Philip Bur-  
gan by the Referees appointed by the devisees of Thom-  
as Burgan to divide the estate of the estate of said  
Thomas Burgan in May 1836

Surveyed by  
E. R. Pischerman

27<sup>th</sup> of Aug<sup>r</sup> 1874

The parties to the Deed are  
Philip D. Bryan  
Daniel N. Barton &  
Elizabeth Barton his wife  
John Bryan  
William Gannan and  
Amelia Gannan his wife

---

under

Courses of Mrs Elizabeth Bartons part All that part of the tract  
 off land called Deer Pit Being a part of that portion of said tract laid  
 off by William Schauf Joseph Human and Anass Mead referees appoin-  
 ted by the Devises Thomas Bungan deceased to divide the Land of said Bungan  
 amongst them as the portion of Mrs Deborah Bungan Beginning for said part  
 3 on the S. E. side of the Bell Air Road and at the end of ~~27 1/2~~ <sup>the first line of</sup>  
<sup>the whole land given said</sup> the part assigned to the said Deborah Bungan and running thence south  
 50 West boundary on the S. E. side of the Bell Air road and running the first  
 line of said part 27 1/2 p then S 36 E 27 1/2 then N 51 E 34 p to the second  
 line of the whole ~~ground assigned to said Deborah Bungan~~ <sup>land at</sup> and then run-  
 ning said line and boundary thence N 40 E W 36 1/2 p to the beginning con-  
 taining five acres off land more or less 4

Courses Comprising Philip D Bungan part Beginning at a stone  
 planted at the end of the second line of the whole ~~ground assigned to~~ <sup>land as aforesaid</sup>  
~~Deborah Bungan~~ and running thence bounding on the east lines  
 thereof ~~the following courses viz~~ <sup>the following courses viz</sup> S 34 E 8 p to a stone S 52 W 102 1/2 p to a stone  
 N 39 1/2 W 27 1/2 p then N 52 E parallel with the S line of the part now described  
 109 p to the second line of the whole ~~ground assigned to Deborah Bungan~~ <sup>land at</sup>  
 and then running and bounding on said line S 40 E 23 1/2 p to the beginning conta-  
 18 3 00 off land more or less 2

Courses Comprising the part to be conveyed to John Bungan and Amelia  
 Saninam <sup>settling</sup> Beginning for the same at the beginning of the whole ~~ground~~ <sup>land</sup>  
~~as aforesaid~~ <sup>as aforesaid</sup> and running thence ~~the~~ <sup>the</sup> boundary on said line  
 N 30 E 39 1/2 p to the end of the first line of that part ~~then conveyed to Elizabeth~~  
 Barton then running and bounding on said part the two following courses viz  
 S 36 E 27 1/2 N 51 E 34 p then running and bounding on the 2<sup>d</sup> line of the whole  
~~ground assigned to Deborah Bungan~~ <sup>land at</sup> N 40 E 40 1/2 p to Philip D Bungan  
 the part then running and bounding on said part S 52 W 110 p to the third line of the  
 whole ~~ground assigned to said Deborah Bungan~~ <sup>land at</sup> and then running and bound-  
 on the east lines ~~of the whole ground~~ <sup>the following courses viz</sup> N 39 1/2 W 13 1/2 p  
 to a stone N 50 E 40 1/2 N 39 1/2 W 50 p to the beginning ~~containing~~ <sup>containing</sup> 2 3/4 acres  
 off land more or less 6



Mr Moore and land

Stone 18 rods

Scale - 30 p in one inch  
 Surveyed May 1836  
 A. J. Boulden  
 S. B. C

Copied from J. K No 347-6

Course comprising Mrs. Deborah Burgans Part-  
Beg at A it being a stone now planted on the  
S. E. side of the Belle Air road at the end of  
40 p 100 50° East from where the 6<sup>th</sup> line of Deer  
Bit into the ~~sd~~ rd turning and ending  
sd rd

1 - N. 50° E 66½ p to a stone stand at the  
O. end of sd rd & a rd now laid out one perch  
wide the running along the sd last mentd  
rd the two fully courses

2 - O. 40½ E 90½ p to a stone

3 - O. 24½ W 8 p " " "

4 - S. 52 W 102½ p to a stone

5 - N. 39¼ W 40½ p to a stone

6 - N. 50 E 40½ p to a stone

7 - N. 39¼ W 50½ to the beg at A //

Conty 47 a - 2 - 00 of ld ± colored  
yellow

EB

Mr. Henderson  
Part of  
The Bingham  
Bellevue

Bellevue

900

the

" Houses comprising part of  
M<sup>r</sup> Horrester's part of the Estate  
Thomas Burgan allotted to M<sup>r</sup>

Horrester about the year 1836 Situate  
lying and being in Baltimore County  
and described as follows Beginning  
of the land at a stone heretofore planted  
at the end of the  $S 46^{\circ} W 30$  fms line of  
M<sup>r</sup> Horrester's part of said land and  
running thence  $N 36 \frac{1}{4}^{\circ} E 5 \frac{3}{4}$  fms to a small  
rock in a branch thence along the Centre  
of said branch  $S 77^{\circ} E 13 \frac{1}{4}$  fms to a point on the  
bridge at the County road  $S 15^{\circ} E 15 \frac{1}{2}$  feet from  
an Elm tree thence along the Centre of the  
County road  $S 34^{\circ} E 12 \frac{1}{4}$  fms to a point  $S 84 \frac{3}{4}^{\circ} E$   
21 feet from an Apple tree thence  $S 56^{\circ} E 13 \frac{3}{4}$  fms  
to a branch at a point  $S 13 \frac{1}{2}^{\circ} E 8 \frac{1}{2}$  feet from  
a beech tree thence running with and bounding on  
said branch

Chas. Keating

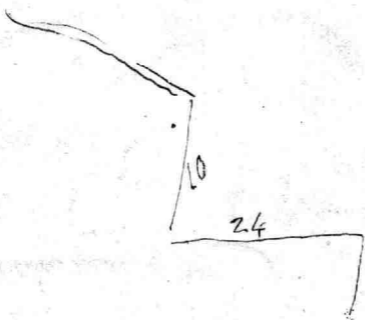
Supra if you see this letter  
I am going to send you a  
complete set of papers  
to be of good use

Redeem  
go as soon as  
the money  
is ready

Mr. Keating  
of  
Chas. Keating & Co.  
Baltimore

# Memorandum on the Survey of Burgans Land in Balto County —

$$\begin{array}{r}
 3894.1 \\
 140 \quad 3894.1 \\
 \hline
 3206.2
 \end{array}$$



$$\begin{array}{r}
 17\frac{1}{2} \\
 17\frac{1}{2} \\
 \hline
 35
 \end{array}$$

1756 1759 1762  
 1765 1768 1771  
 1774 1777 1780  
 1783 1786 1789  
 1792 1795 1798  
 1801 1804 1807  
 1810 1813 1816  
 1819 1822 1825  
 1828 1831 1834  
 1837 1840 1843  
 1846 1849 1852  
 1855 1858 1861  
 1864 1867 1870  
 1873 1876 1879  
 1882 1885 1888  
 1891 1894 1897  
 1900 1903 1906  
 1909 1912 1915  
 1918 1921 1924  
 1927 1930 1933  
 1936 1939 1942  
 1945 1948 1951  
 1954 1957 1960  
 1963 1966 1969  
 1972 1975 1978  
 1981 1984 1987  
 1990 1993 1996  
 1999 2002 2005  
 2008 2011 2014  
 2017 2020 2023  
 2026 2029 2032  
 2035 2038 2041  
 2044 2047 2050  
 2053 2056 2059  
 2062 2065 2068  
 2071 2074 2077  
 2080 2083 2086  
 2089 2092 2095  
 2098 2101 2104  
 2107 2110 2113  
 2116 2119 2122  
 2125 2128 2131  
 2134 2137 2140  
 2143 2146 2149  
 2152 2155 2158  
 2161 2164 2167  
 2170 2173 2176  
 2179 2182 2185  
 2188 2191 2194  
 2197 2200 2203  
 2206 2209 2212  
 2215 2218 2221  
 2224 2227 2230  
 2233 2236 2239  
 2242 2245 2248  
 2251 2254 2257  
 2260 2263 2266  
 2269 2272 2275  
 2278 2281 2284  
 2287 2290 2293  
 2296 2299 2302  
 2305 2308 2311  
 2314 2317 2320  
 2323 2326 2329  
 2332 2335 2338  
 2341 2344 2347  
 2350 2353 2356  
 2359 2362 2365  
 2368 2371 2374  
 2377 2380 2383  
 2386 2389 2392  
 2395 2398 2401  
 2404 2407 2410  
 2413 2416 2419  
 2422 2425 2428  
 2431 2434 2437  
 2440 2443 2446  
 2449 2452 2455  
 2458 2461 2464  
 2467 2470 2473  
 2476 2479 2482  
 2485 2488 2491  
 2494 2497 2500  
 2503 2506 2509  
 2512 2515 2518  
 2521 2524 2527  
 2530 2533 2536  
 2539 2542 2545  
 2548 2551 2554  
 2557 2560 2563  
 2566 2569 2572  
 2575 2578 2581  
 2584 2587 2590  
 2593 2596 2599  
 2602 2605 2608  
 2611 2614 2617  
 2620 2623 2626  
 2629 2632 2635  
 2638 2641 2644  
 2647 2650 2653  
 2656 2659 2662  
 2665 2668 2671  
 2674 2677 2680  
 2683 2686 2689  
 2692 2695 2698  
 2701 2704 2707  
 2710 2713 2716  
 2719 2722 2725  
 2728 2731 2734  
 2737 2740 2743  
 2746 2749 2752  
 2755 2758 2761  
 2764 2767 2770  
 2773 2776 2779  
 2782 2785 2788  
 2791 2794 2797  
 2800 2803 2806  
 2809 2812 2815  
 2818 2821 2824  
 2827 2830 2833  
 2836 2839 2842  
 2845 2848 2851  
 2854 2857 2860  
 2863 2866 2869  
 2872 2875 2878  
 2881 2884 2887  
 2890 2893 2896  
 2899 2902 2905  
 2908 2911 2914  
 2917 2920 2923  
 2926 2929 2932  
 2935 2938 2941  
 2944 2947 2950  
 2953 2956 2959  
 2962 2965 2968  
 2971 2974 2977  
 2980 2983 2986  
 2989 2992 2995  
 2998 3001 3004  
 3007 3010 3013  
 3016 3019 3022  
 3025 3028 3031  
 3034 3037 3040  
 3043 3046 3049  
 3052 3055 3058  
 3061 3064 3067  
 3070 3073 3076  
 3079 3082 3085  
 3088 3091 3094  
 3097 3100 3103  
 3106 3109 3112  
 3115 3118 3121  
 3124 3127 3130  
 3133 3136 3139  
 3142 3145 3148  
 3151 3154 3157  
 3160 3163 3166  
 3169 3172 3175  
 3178 3181 3184  
 3187 3190 3193  
 3196 3199 3202  
 3205 3208 3211  
 3214 3217 3220  
 3223 3226 3229  
 3232 3235 3238  
 3241 3244 3247  
 3250 3253 3256  
 3259 3262 3265  
 3268 3271 3274  
 3277 3280 3283  
 3286 3289 3292  
 3295 3298 3301  
 3304 3307 3310  
 3313 3316 3319  
 3322 3325 3328  
 3331 3334 3337  
 3340 3343 3346  
 3349 3352 3355  
 3358 3361 3364  
 3367 3370 3373  
 3376 3379 3382  
 3385 3388 3391  
 3394 3397 3400  
 3403 3406 3409  
 3412 3415 3418  
 3421 3424 3427  
 3430 3433 3436  
 3439 3442 3445  
 3448 3451 3454  
 3457 3460 3463  
 3466 3469 3472  
 3475 3478 3481  
 3484 3487 3490  
 3493 3496 3499  
 3502 3505 3508  
 3511 3514 3517  
 3520 3523 3526  
 3529 3532 3535  
 3538 3541 3544  
 3547 3550 3553  
 3556 3559 3562  
 3565 3568 3571  
 3574 3577 3580  
 3583 3586 3589  
 3592 3595 3598  
 3601 3604 3607  
 3610 3613 3616  
 3619 3622 3625  
 3628 3631 3634  
 3637 3640 3643  
 3646 3649 3652  
 3655 3658 3661  
 3664 3667 3670  
 3673 3676 3679  
 3682 3685 3688  
 3691 3694 3697  
 3699 3702 3705  
 3708 3711 3714  
 3717 3720 3723  
 3726 3729 3732  
 3735 3738 3741  
 3744 3747 3750  
 3753 3756 3759  
 3762 3765 3768  
 3771 3774 3777  
 3780 3783 3786  
 3789 3792 3795  
 3798 3801 3804  
 3807 3810 3813  
 3816 3819 3822  
 3825 3828 3831  
 3834 3837 3840  
 3843 3846 3849  
 3852 3855 3858  
 3861 3864 3867  
 3870 3873 3876  
 3879 3882 3885  
 3888 3891 3894  
 3897 3900 3903  
 3906 3909 3912  
 3915 3918 3921  
 3924 3927 3930  
 3933 3936 3939  
 3942 3945 3948  
 3951 3954 3957  
 3960 3963 3966  
 3969 3972 3975  
 3978 3981 3984  
 3987 3990 3993  
 3996 3999 4002  
 4005 4008 4011  
 4014 4017 4020  
 4023 4026 4029  
 4032 4035 4038  
 4041 4044 4047  
 4050 4053 4056  
 4059 4062 4065  
 4068 4071 4074  
 4077 4080 4083  
 4086 4089 4092  
 4095 4098 4101  
 4104 4107 4110  
 4113 4116 4119  
 4122 4125 4128  
 4131 4134 4137  
 4140 4143 4146  
 4149 4152 4155  
 4158 4161 4164  
 4167 4170 4173  
 4176 4179 4182  
 4185 4188 4191  
 4194 4197 4200  
 4203 4206 4209  
 4212 4215 4218  
 4221 4224 4227  
 4230 4233 4236  
 4239 4242 4245  
 4248 4251 4254  
 4257 4260 4263  
 4266 4269 4272  
 4275 4278 4281  
 4284 4287 4290  
 4293 4296 4299  
 4302 4305 4308  
 4311 4314 4317  
 4320 4323 4326  
 4329 4332 4335  
 4338 4341 4344  
 4347 4350 4353  
 4356 4359 4362  
 4365 4368 4371  
 4374 4377 4380  
 4383 4386 4389  
 4392 4395 4398  
 4401 4404 4407  
 4410 4413 4416  
 4419 4422 4425  
 4428 4431 4434  
 4437 4440 4443  
 4446 4449 4452  
 4455 4458 4461  
 4464 4467 4470  
 4473 4476 4479  
 4482 4485 4488  
 4491 4494 4497  
 4499 4502 4505  
 4508 4511 4514  
 4517 4520 4523  
 4526 4529 4532  
 4535 4538 4541  
 4544 4547 4550  
 4553 4556 4559  
 4562 4565 4568  
 4571 4574 4577  
 4580 4583 4586  
 4589 4592 4595  
 4598 4601 4604  
 4607 4610 4613  
 4616 4619 4622  
 4625 4628 4631  
 4634 4637 4640  
 4643 4646 4649  
 4652 4655 4658  
 4661 4664 4667  
 4670 4673 4676  
 4679 4682 4685  
 4688 4691 4694  
 4697 4700 4703  
 4706 4709 4712  
 4715 4718 4721  
 4724 4727 4730  
 4733 4736 4739  
 4742 4745 4748  
 4751 4754 4757  
 4760 4763 4766  
 4769 4772 4775  
 4778 4781 4784  
 4787 4790 4793  
 4796 4799 4802  
 4805 4808 4811  
 4814 4817 4820  
 4823 4826 4829  
 4832 4835 4838  
 4841 4844 4847  
 4850 4853 4856  
 4859 4862 4865  
 4868 4871 4874  
 4877 4880 4883  
 4886 4889 4892  
 4895 4898 4901  
 4904 4907 4910  
 4913 4916 4919  
 4922 4925 4928  
 4931 4934 4937  
 4940 4943 4946  
 4949 4952 4955  
 4958 4961 4964  
 4967 4970 4973  
 4976 4979 4982  
 4985 4988 4991  
 4994 4997 5000  
 5003 5006 5009  
 5012 5015 5018  
 5021 5024 5027  
 5030 5033 5036  
 5039 5042 5045  
 5048 5051 5054  
 5057 5060 5063  
 5066 5069 5072  
 5075 5078 5081  
 5084 5087 5090  
 5093 5096 5099  
 5102 5105 5108  
 5111 5114 5117  
 5120 5123 5126  
 5129 5132 5135  
 5138 5141 5144  
 5147 5150 5153  
 5156 5159 5162  
 5165 5168 5171  
 5174 5177 5180  
 5183 5186 5189  
 5192 5195 5198  
 5201 5204 5207  
 5210 5213 5216  
 5219 5222 5225  
 5228 5231 5234  
 5237 5240 5243  
 5246 5249 5252  
 5255 5258 5261  
 5264 5267 5270  
 5273 5276 5279  
 5282 5285 5288  
 5291 5294 5297  
 5299 5302 5305  
 5308 5311 5314  
 5317 5320 5323  
 5326 5329 5332  
 5335 5338 5341  
 5344 5347 5350  
 5353 5356 5359  
 5362 5365 5368  
 5371 5374 5377  
 5380 5383 5386  
 5389 5392 5395  
 5398 5401 5404  
 5407 5410 5413  
 5416 5419 5422  
 5425 5428 5431  
 5434 5437 5440  
 5443 5446 5449  
 5452 5455 5458  
 5461 5464 5467  
 5470 5473 5476  
 5479 5482 5485  
 5488 5491 5494  
 5497 5500 5503  
 5506 5509 5512  
 5515 5518 5521  
 5524 5527 5530  
 5533 5536 5539  
 5542 5545 5548  
 5551 5554 5557  
 5560 5563 5566  
 5569 5572 5575  
 5578 5581 5584  
 5587 5590 5593  
 5596 5599 5602  
 5605 5608 5611  
 5614 5617 5620  
 5623 5626 5629  
 5632 5635 5638  
 5641 5644 5647  
 5650 5653 5656  
 5659 5662 5665  
 5668 5671 5674  
 5677 5680 5683  
 5686 5689 5692  
 5695 5698 5701  
 5704 5707 5710  
 5713 5716 5719  
 5722 5725 5728  
 5731 5734 5737  
 5740 5743 5746  
 5749 5752 5755  
 5758 5761 5764  
 5767 5770 5773  
 5776 5779 5782  
 5785 5788 5791  
 5794 5797 5800  
 5803 5806 5809  
 5812 5815 5818  
 5821 5824 5827  
 5830 5833 5836  
 5839 5842 5845  
 5848 5851 5854  
 5857 5860 5863  
 5866 5869 5872  
 5875 5878 5881  
 5884 5887 5890  
 5893 5896 5899  
 5902 5905 5908  
 5911 5914 5917  
 5920 5923 5926  
 5929 5932 5935  
 5938 5941 5944  
 5947 5950 5953  
 5956 5959 5962  
 5965 5968 5971  
 5974 5977 5980  
 5983 5986 5989  
 5992 5995 5998  
 6001 6004 6007  
 6010 6013 6016  
 6019 6022 6025  
 6028 6031 6034  
 6037 6040 6043  
 6046 6049 6052  
 6055 6058 6061  
 6064 6067 6070  
 6073 6076 6079  
 6082 6085 6088  
 6091 6094 6097  
 6099 6102 6105  
 6108 6111 6114  
 6117 6120 6123  
 6126 6129 6132  
 6135 6138 6141  
 6144 6147 6150  
 6153 6156 6159  
 6162 6165 6168  
 6171 6174 6177  
 6180 6183 6186  
 6189 6192 6195  
 6198 6201 6204  
 6207 6210 6213  
 6216 6219 6222  
 6225 6228 6231  
 6234 6237 6240  
 6243 6246 6249  
 6252 6255 6258  
 6261 6264 6267  
 6270 6273 6276  
 6279 6282 6285  
 6288 6291 6294  
 6297 6300 6303  
 6306 6309 6312  
 6315 6318 6321  
 6324 6327 6330  
 6333 6336 6339  
 6342 6345 6348  
 6351 6354 6357  
 6360 6363 6366  
 6369 6372 6375  
 6378 6381 6384  
 6387 6390 6393  
 6396 6399 6402  
 6405 6408 6411  
 6414 6417 6420  
 6423 6426 6429  
 6432 6435 6438  
 6441 6444 6447  
 6450 6453 6456  
 6459 6462 6465  
 6468 6471 6474  
 6477 6480 6483  
 6486 6489 6492  
 6495 6498 6501  
 6504 6507 6510  
 6513 6516 6519  
 6522 6525 6528  
 6531 6534 6537  
 6540 6543 6546  
 6549 6552 6555  
 6558 6561 6564  
 6567 6570 6573  
 6576 6579 6582  
 6585 6588 6591  
 6594 6597 6600  
 6603 6606 6609  
 6612 6615 6618  
 6621 6624 6627  
 6630 6633 6636  
 6639 6642 6645  
 6648 6651 6654  
 6657 6660 6663  
 6666 6669 6672  
 6675 6678 6681  
 6684 6687 6690  
 6693 6696 6699  
 6702 6705 6708  
 6711 6714 6717  
 6720 6723 6726  
 6729 6732 6735  
 6738 6741 6744  
 6747 6750 6753  
 6756 6759 6762  
 6765 6768 6771  
 6774 6777 6780  
 6783 6786 6789  
 6792 6795 6798  
 6801 6804 6807  
 6810 6813 6816  
 6819 6822 6825  
 6828 6831 6834  
 6837 6840 6843  
 6846 6849 6852  
 6855 6858 6861  
 6864 6867 6870  
 6873 6876 6879  
 6882 6885 6888  
 6891 6894 6897  
 6899 6902 6905  
 6908 6911 6914  
 6917 6920 6923  
 6926 6929 6932  
 6935 6938 6941  
 6944 6947 6950  
 6953 6956 6959  
 6962 6965 6968  
 6971 6974 6977  
 6980 6983 6986  
 6989 6992 6995  
 6998 7001 7004  
 7007 7010 7013  
 7016 7019 7022  
 7025 7028 7031  
 7034 7037 7040  
 7043 7046 7049  
 7052 7055 7058  
 7061 7064 7067  
 7070 7073 7076  
 7079 7082 7085  
 7088 7091 7094  
 7097 7100 7103  
 7106 7109 7112  
 7115 7118 7121  
 7124 7127 7130  
 7133 7136 7139  
 7142 7145 7148  
 7151 7154 7157  
 7160 7163 7166  
 7169 7172 7175  
 7178 7181 7184  
 7187 7190 7193  
 7196 7199 7202  
 7205 7208 7211  
 7214 7217 7220  
 7223 7226 7229  
 7232 7235 7238  
 7241 7244 7247  
 7250 7253 7256  
 7259 7262 7265  
 7268 7271 7274  
 7277 7280 7283  
 7286 7289 7292  
 7295 7298 7301  
 7304 7307 7310  
 7313 7316 7319  
 7322 7325 7328  
 7331 7334 7337  
 7340 7343 7346  
 7349 7352 7355  
 7358 7361 7364  
 7367 7370 7373  
 7376 7379 7382  
 7385 7388 7391  
 7394 7397 7400  
 7403 7406 7409  
 7412 7415 7418  
 7421 7424 7427

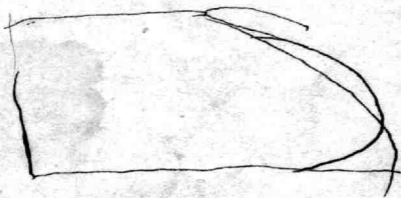
Tuesday morning run from area  
 the line agreeably to the direction  
 of our kind accy  $14\frac{1}{2}$  W  $3\frac{1}{2}$  N  
 $17\frac{1}{2}$  W  $5\frac{1}{2}$  N  $14\frac{1}{2}$  E  $18\frac{1}{2}$  N  $15\frac{1}{2}$  E  
 $10\frac{1}{2}$  N  $15\frac{1}{2}$  E  $5\frac{1}{2}$  N then went to point  
 of Loughran and run  $14\frac{1}{2}$  W  $15\frac{1}{2}$  N  
 at  $13\frac{1}{2}$  ft corner of fence at  $5\frac{1}{2}$  ft. C  
 Spring  $5\frac{1}{2}$  ft to my left at  $12\frac{1}{2}$  ft. C  
 then  $10\frac{1}{2}$  ft to my right then  $11\frac{1}{2}$  E  $6\frac{1}{2}$  N  
 to  $3\frac{1}{2}$  ft on the  $6\frac{1}{2}$  ft line then run  
 from the  $48\frac{1}{2}$  ft line P. Runner then  
 bears  $175\frac{1}{4}$  W corner of his fence & the  
 of road bears  $162\frac{1}{2}$  W W Oak then  
 bears  $182\frac{1}{2}$  W old man then  
 $135\frac{1}{4}$  W then run  $178\frac{1}{2}$  W  $40\frac{1}{2}$  N  
 Maner then bears  $139\frac{1}{2}$  E then  
 $129\frac{1}{2}$  W  $11\frac{1}{2}$  N  $16\frac{1}{2}$  E  $10\frac{1}{2}$  N P. B  
 nyan fence bears  $165\frac{1}{2}$  W P. A  
 House then  $185\frac{1}{2}$  W Oak then  $188\frac{1}{2}$  W  
 W Mrs. Braden's house  $123\frac{1}{2}$  W  
 P. B nyan's house then bears  $13\frac{1}{2}$  N  
 then run  $136\frac{1}{2}$  E  $13\frac{1}{2}$  N P. B nyan  
 house bears  $17\frac{1}{2}$  W then  $125\frac{1}{2}$  W  $32\frac{1}{2}$  N  
 to the B. A. road then along  
 the road  $146\frac{1}{4}$  E  $30\frac{1}{2}$  N Mrs. Braden  
 house then  $154\frac{1}{2}$  W old man  
 house  $15\frac{1}{2}$  E then along the road  
 $150\frac{1}{2}$  E  $102\frac{1}{2}$  N at  $20\frac{1}{2}$  ft. A. head of  
 line At  $22\frac{1}{2}$  ft road runs  
 at  $115\frac{1}{2}$  ft. north Spring at  $8\frac{1}{2}$  ft  
 W. Farnham's house then  $185\frac{1}{2}$  E  
 $18\frac{1}{2}$  N  $134\frac{1}{2}$  E  $19\frac{1}{2}$  N  $128\frac{1}{4}$  W  $7\frac{1}{2}$  N

$152\frac{1}{2}$  W  $41\frac{1}{2}$  N to cross fence then  
 $139\frac{1}{2}$  E  $3\frac{1}{2}$  N Harry Johnson's house  
 bears  $149\frac{1}{2}$  W then  $151\frac{1}{2}$  W  $28\frac{1}{2}$  N to  
 the same then  $167\frac{1}{2}$  W  $6\frac{1}{2}$  N then fence  
 bears  $17\frac{1}{2}$  E then went to end of  
 $72\frac{1}{2}$  ft line and run  $135\frac{1}{2}$  W  $13\frac{1}{2}$  N  
 to the S. E. corner of Mr. Farnham's  
 then went to the corner of S. F. fence  
 and run  $152\frac{1}{2}$  E  $9\frac{1}{2}$  N end of  
 $79\frac{1}{2}$  ft line then  $160\frac{1}{2}$  W  $4\frac{1}{2}$  N to  
 end of  $64\frac{1}{2}$  ft line to F. house  
 $156\frac{1}{2}$  W  $4\frac{1}{2}$  N  $129\frac{1}{2}$  W  $22\frac{1}{2}$  N  
 $141\frac{1}{2}$  W  $4\frac{1}{2}$  N at  $120\frac{1}{2}$  ft line then  
 went to the  $169\frac{1}{2}$  W then ady to  
 Dinner. after Dinner continued  
 at the same point and run  
 $144\frac{1}{2}$  W  $27\frac{1}{2}$  N then  $113\frac{1}{2}$  E  $12\frac{1}{2}$  N  
 P. B nyan's house bears  $181\frac{1}{2}$  W  
 Mrs. Braden's house bears  $158\frac{1}{2}$  W  
 then  $157\frac{1}{2}$  W  $10\frac{1}{2}$  N  $184\frac{1}{2}$  E  $24\frac{1}{2}$  N  $170\frac{1}{2}$  E  
 $5\frac{1}{2}$  N  $154\frac{1}{2}$  E  $29\frac{1}{2}$  N the where as  
 line of Mr. Johnson & Shively  
 is  $142\frac{1}{4}$  E  $14\frac{1}{2}$  N then run from  
 $24\frac{1}{2}$  ft line  $144\frac{1}{2}$  W  $11\frac{1}{2}$  N then fence  
 continues as above then run  
 to  $136\frac{1}{2}$  E  $10\frac{1}{2}$  N to the B. A. road  
 then along the road  $155\frac{1}{2}$  W  $13\frac{1}{2}$  N at  $46\frac{1}{2}$  ft  
 W. Farnham's property bears  $133\frac{1}{2}$  W  
 then end of Mr. Harry Johnson  
 house bears  $111\frac{1}{2}$  E then  $152\frac{1}{2}$  W  
 $10\frac{1}{2}$  N  $16\frac{1}{2}$  N then Johnson's  
 house  $188\frac{1}{2}$  E then  $115\frac{1}{2}$  E  $23\frac{1}{2}$  N  $156\frac{1}{2}$  W  
 $40\frac{1}{2}$  N  $136\frac{1}{2}$  W  $27\frac{1}{2}$  N at  $6\frac{1}{2}$  ft the

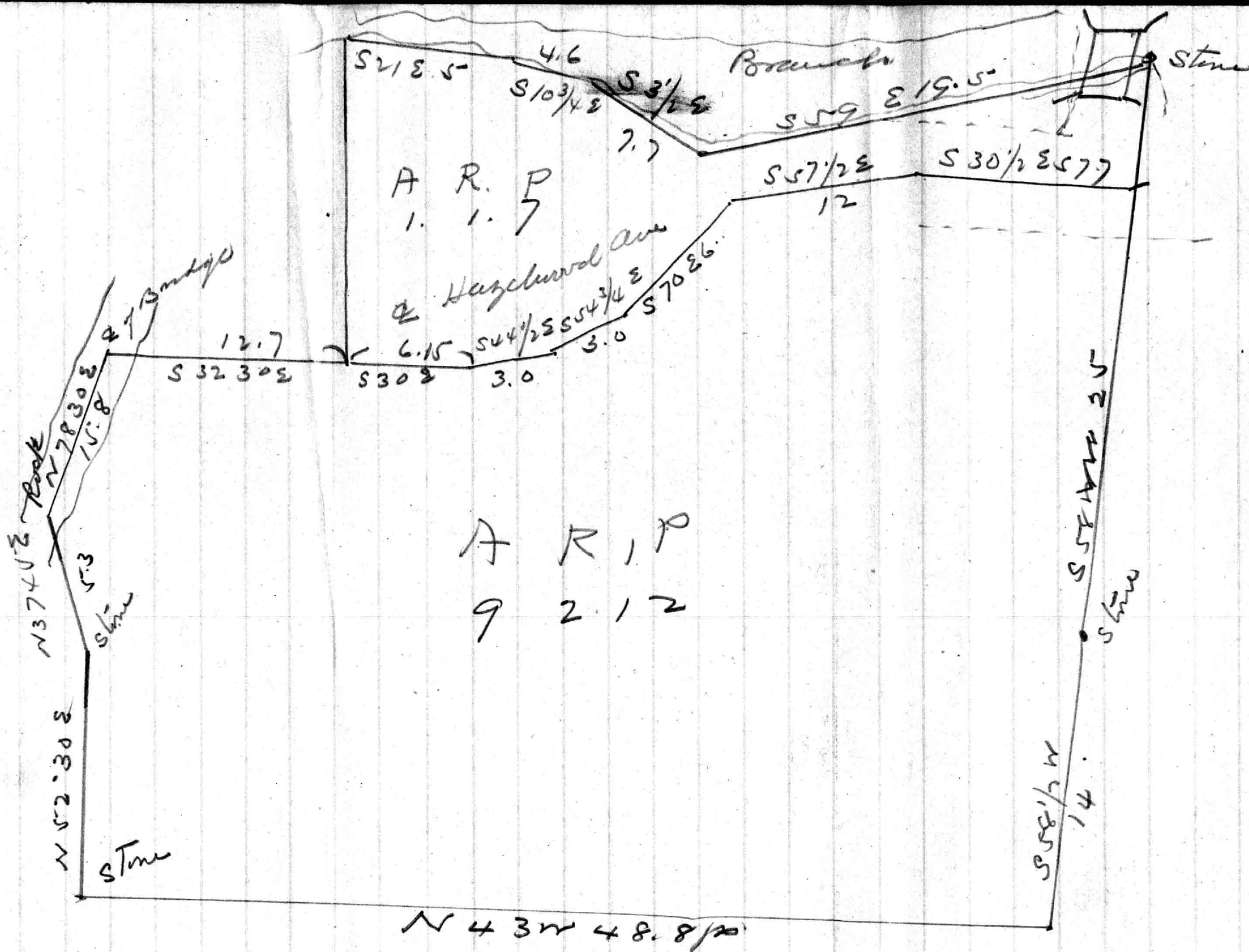
around fence bears N25 1/2 E  
 25 1/2 W 26 1/4 then N33 W 3 1/4 then  
 25 7/2 W to the out line then west  
 to the end of the 26 1/2 pole and  
 run N 7/2 E 11. M 32 E 18 M 47 1/2 E  
 11 M the end of the 32.7 pole line  
 is N80 E. 149 1/2 W M at 32 M  
 the crop fence ~~bears~~ of P Bunge  
 on the East side of the road bears  
 S37 1/2 E 7 at 57 M (M P Bunge  
 house) fence is N80 E

N22 E 24 1/2

24 1/2 N 11 1/2 W  
 W 7 1/2 E 4 from all 35



set 8 M on the post line  
 along the road P Bunge Gate



(2)

(3)

Obediah Sanders twf } nov 2, 1863  
 to } G. H. B. 39.5-  
 Thos Cunningham<sup>2nd</sup>

Beginning at Stone<sup>11</sup> of 13<sup>th</sup> line  
 after whole lot the with land Bounding  
 the said line S 26 W 24<sup>3</sup>/<sub>4</sub> po to  
 middle line road then a said  
 County road 6 Course N 50 W 3<sup>1</sup>/<sub>2</sub> N 9<sup>1</sup>/<sub>2</sub> W  
 14 N 60 W 8.3 ps N 89 W 8 ps S 84 W  
 2<sup>9</sup>/<sub>10</sub> ps N 73 W 4<sup>1</sup>/<sub>2</sub> ps to point opposite  
 a stone on South side of said County  
 road as a boundary of sd Sanders  
 & Bryan land th N 31 E 44 ps to beg  
 of 1<sup>2</sup> line of whole lot then a said  
 line S 32<sup>1</sup>/<sub>2</sub> E 42 ps to beg. 66-2 rods.

Obediah Sanders twf } Aug 20 1860  
 to } G. H. C. 30-241  
 Thos Bryan

Beg at the end of 9<sup>9</sup>/<sub>10</sub> ps on 4<sup>th</sup> line  
 of Thos Bryan land th N 43<sup>1</sup>/<sub>2</sub> E  
 15<sup>3</sup>/<sub>10</sub> ps to side of a County road  
 the with sd road N 65<sup>1</sup>/<sub>2</sub> W 79<sup>1</sup>/<sub>10</sub> ps  
 N 49 W 45<sup>7</sup>/<sub>10</sub> ps to intersect the sd 4<sup>th</sup>  
 line the with sd line reversely to beg -  
 2<sup>1</sup>/<sub>4</sub> Acre

(4)

Abediah Sanders & wife } May 17 1862  
\* } G. J. C. 32 - 390  
Thos Richards & } Confirm -

Begin at astrue at the beginning of the ✓  
S 6 6 1/2 E 50 ps of whole tract the north  
ed line S 6 6 1/2 E 9 1/10 ps to astrue the S 4 3 1/2 W  
3 1/8 10 ps to the of County road the N 4 2 W  
10 1/10 ps to the out line of the whole lot  
the on sd astrue to beg —

Abediah Sanders & wife } May 17  
\* } 1862  
Mary Jane Amos & children } G. J. C. 35  
309

Begin at astrue in the S 6 6 1/2 E 50 ps line  
of the whole lot at the astrue of 9 1/10 ps from  
the beg of sd line also end of 2 ed line  
of Richards lot the on Richards lot  
S 4 3 W 3 1/8 10 ps to the of County road  
the along sd E S 4 8 E 25 9/10 ps to astrue  
the N 4 4 E 40 7/20 ps to astrue in the of road  
on line of the whole lot the on sd line  
reversely N 6 6 1/2 W 28 2/10 ps to beg  
S. A. 3 road

✓

(5)

Obediah Sanders  
+ wif

Nov 27 1864  
AHC 31 164

to  
Mary Jane Amos

Pay at a Stone in the S 66 1/2 E 55 ps  
line of where lot at dist of 9 1/10 ps

duplicate dec corp from  
Sanders to Amos

17<sup>th</sup> May 1862

14

337

25

327

30

24

17

463

12

12

14

337

14

339

14

340

For Title to said property see  
deed Richard Collins to Joseph  
Forrester Oct 7 1843 N 71° 10' - 20'  
+ will of Rachel Forrester J.B.M. 5-30

See Tube no 7

Richard Collins to }  
Joseph Forrester }

Begin at a stone at the end of N 46° W 50 ps  
line of land conveyed by Garrett  
Forrester to Richard Collins  
May 18 1840 the on the line of sd land  
S 49° W 13 ps to stone the S 47° E 48 8/10  
ps to stone plantation N 53° E 107 ps line  
of sd land the on sd line N 53° E 14 ps to the  
stone planted at end of said line the to  
Hubay 4 Acres

Rough Description  
of  
Lot sold by Bryan  
to  
Brainard  
Pelluc road  
March 1854

Court.

E of Henry Run

Bt 2 S<sup>o</sup> 367

Houses comprising a Part of the Tract of Land Called  
Parrell Rect. Shrewsbury or, Deer Bit, to be conveyed by Daniel S. Buggan  
to Benjamin Brainard, Situated being in Baltimore  
County and contained within the Mette bounds Courses and  
Distances following that is to say Beginning for the same  
at a stone heretofore planted at the end of the South Seventeen degrees  
East 61 ps line of the ground that was allotted to Philip Buggan in the  
Division of Thos. Buggans Estate, and running with and bounding on  
said line North 16 degrees West. 62  $\frac{3}{4}$  ps to p stone <sup>heretofore planted at a corner of said lot</sup> thence South 56 West-  
10  $\frac{1}{4}$  ps to a stake thence South 16 degrees East parallel with that line  
62  $\frac{3}{4}$  ps to the North West Side of the Belle Air road thence bounding  
on said road N 33 E. 10  $\frac{1}{4}$  ps to the Beginning containing How  
Acres of ground More or Less. It being and comprising a part  
of the Land that was allotted to Philip Buggan in the division  
of Thos. Buggan Estate on the 20<sup>th</sup> of May 1836.

SECTION I.

Beginning for the same at a White Oak tree a corner of the whole tract of land which the herein described lot is a part thence bounding on the outline of said whole tract south 70 degrees east 254  $1/4$  feet to the north west side of the Belair Road thence binding on said Belair Road south 52 degrees 46 minutes west 586  $1/12$  feet to the outline of the foresaid whole tract thence binding thereon north 32 degrees 20 minutes east 177  $2/12$  feet to a stone thence north 45 degrees west 155 feet more or less to the centre of an avenue 50 feet wide laid out parallel with and distant 525 feet southerly at right angles from the north western outline of the aforesaid whole tract thence bounding on said avenue north 45 degrees east 450 feet thence at right angles to said avenue south 45 degrees east 76 feet more or less to intersect the outline of said whole tract thence bounding thereon south 29 degrees west 14 feet more or less to the place of beginning. Containing 4  $05/100$  acres of land more or less. Being Section I in a plat of division of the whole tract of which the herein described lot is a part.

## Section H

Beginning for the same in the centre of an avenue 50 feet wide laid out parallel with and distant 525 feet southerly at right angles from the north western outline of the whole tract of which the herein described lot is a part said point of beginning being at the north east corner of section G in a plat of division of the whole tract of which the herein described lot is a part and thence bounding on said avenue south 45 degrees west 50 feet thence at right angles to said avenue south 45 degrees east 176 feet more or less to intersect the outline of the aforesaid whole tract thence bounding on said outline north 29 degrees east 211 feet more or less to the centre of Hamilton Ave., thence binding on the centre of Hamilton Ave., north 38 degrees 51 minutes west 62  $\frac{2}{3}$  feet <sup>N. 5° 55' W</sup> ~~north 55 degrees west~~ 200 feet north 45 degrees <sup>54</sup> ~~45~~ minutes west 90 feet north 70 degrees 51 minutes west 100 feet south 87 degrees 08 minutes west 98 feet more or less to the centre ~~line~~ of an avenue 50 feet wide laid out parallel with and distant 175 feet southerly from the aforesaid north western outline thence binding on said centre line south 45 degrees west 163 feet more or less to intersect a line drawn <sup>southerly</sup> at right angles from said avenue to the point of beginning, and thence binding on said line south 45 degrees east 350 feet to the place of beginning. Containing 2  $\frac{92}{100}$  acres of land more or less.

Being Section H on the aforesaid plat of division.

SECTION G.

Beginning for the same in the centre of an avenue 50 feet wide laid out parallel with and distant 525 feet southerly from the north western outline of the whole tract of land of which the herein described lot is a part said point of beginning being at the north east corner of section F on plat of division of the aforesaid whole tract thence bounding on the centre of the aforesaid avenue north 45 degrees east 200 feet thence at right angles to said avenue north 45 degrees west 350 feet to the centre of an avenue 50 feet wide laid out parallel with and distant 175 feet southerly at right angle from the aforesaid north western outline thence bounding on said avenue south 45 degrees west 200 feet and thence south 45 degrees east 350 feet to the place of beginning. Containing  $1 \frac{6}{10}$  acres. Being section G on the aforesaid plat of division.

## SECTION F

Beginning for the same in the centre of an avenue 50 feet wide laid out parallel with and distant 525 feet southerly at right angles from the north western outline of the whole tract of which the herein described lot is a part said point of beginning being distant <sup>155</sup>~~125~~ feet north 45 degrees west from a stone a corner of the aforesaid whole tract thence bounding in the centre of the aforesaid avenue north 45 degrees east 300 feet thence at right angles to said avenue north 45 degrees west 350 feet to the centre of an avenue 50 feet wide laid out parallel with and distant 175 feet southerly from the north western outline of the aforesaid whole tract thence bounding thereon south 45 degrees west 300 feet thence south 45 degrees east 350 feet to the place of beginning. Containing  $2 \frac{39}{100}$  acres of land more or less.

Being section F on plat of division of the whole tract of which the herein described lot is a part.

## SECTION E

Beginning for the same in the centre of an avenue 50 feet wide laid out parallel with and distant 175 feet southerly at right angles to the north western outlines of the whole tract of land which the herein described lot is a part said point of beginning being at the distance of 627 feet north 45 degrees east from the centre of an avenue 50 feet wide as laid out on a plat of division of the aforesaid whole tract thence south 45 degrees east at right angles to said avenue 399 feet more or less to intersect the south eastern outline of the aforesaid whole tract thence bounding on said outline north 47 degrees 01 minutes east 200 feet more or less to a stone a corner of said whole tract thence north 45 degrees west parallel to the 2nd line of the herein described lot 405 feet more or less to the centre of the 1st above mentioned avenue and thence bounding thereon south 45 degrees west 200 feet more or less to the place of beginning. Containing  $2 \frac{34}{100}$  acres of land more or less.

Being section E on the aforesaid plat of division.

#### SECTION D

Beginning for the same in the centre of an avenue 50 feet wide laid out parallel with and distant 175 feet southerly at right angles to the north western outline of the whole tract of land of which the herein described lot is a part said point of beginning being at the distant of 327 feet north 45 degrees east from the centre of another avenue 50 feet wide as laid out on a plat of division of the whole tract of which the herein described land is a part and running thence bounding on the 1st above mentioned avenue north 45 degrees east 300 feet thence south 45 degrees east at right angle to said avenue 499 feet more or less to intersect the southern eastern outline of the aforesaid whole tract thence with and bounding on said outline south 47 degrees 01 minutes west 300 feet 2 inches thence north 45 degrees west 391 feet more or less to the place of beginning. Containing  $3 \frac{4}{10}$  acres more or less.

Being section D on the aforesaid plat of division.

SECTION C.

Beginning for the same on the north west side of the Belair Turnpike Road at the distant of  $263 \frac{2}{3}$  feet north 53 degrees 48 minutes east from western outline of the whole tract of which the herein described lot is a part said point of beginning being in the centre of an avenue 50 feet wide laid out at right angles to the north western outline of the aforesaid whole tract and running thence bounding on the centre of said avenue north 45 degrees west 567 feet more or less to an avenue 50 feet wide laid parallel and distant 175 feet southerly at right angles to the aforesaid north west outline thence with and bounding thereon north 45 degrees east 327 feet thence south 45 degrees east parallel to the first above mentioned avenue 391 feet more or less to intersect the south eastern outline of the aforesaid whole tract thence with and bounding on said outline south 47 degrees 01 minute west 220 feet more or less to a stone thence still on the outlines of said whole tract south 1 degree 9 minutes east 119 feet 8 inches to the north west side of said Belair Road thence with and bounding on said Road south 53 degrees 48 minutes west  $25 \frac{1}{3}$  feet to the place of beginning.

Containing  $3 \frac{72}{100}$  acres of land more or less.

Being section C in plat of the whole tract of which the herein described lot is a part.

## SECTION B

Beginning for the same on the north west side of the Belair Turnpike Road where the same is intersected by the western outlines of the whole tract of land which the herein described lot is apart and running thence with and bounding on the north west side of said Turnpike Road north 53 degrees 48 minutes ~~west~~ <sup>East</sup> 263  $\frac{8}{12}$  feet to the centre of an avenue 50 feet wide laid out and right angle from the north western outline of the aforesaid whole tract thence with and bounding on the centre of said avenue north 45 degrees west 567 feet more or less to the centre of a 50 foot avenue laid out parallel with and distant 175 feet southerly at right angles from the aforesaid North western outline, then with and bounding on the last mentioned avenue South 45 degrees West 193 feet, more or less to intersect the western outline of the whole tract and thence bounding thereon South 37 degrees 06 minutes East <sup>530</sup> ~~500~~  $\frac{3}{4}$  feet to the place of beginning. Containing 3  $\frac{5}{10}$  Acres of land more or less. Being section B. on plat of which the herein described lot is a part.

## SECTION A

Beginning for the same in the centre of Hamilton Ave., at the distance of 15 10/12 feet north 45 degrees east from a stone planted on the south west side of Hamilton Ave., in the north western outline of the whole tract of land of which the herein described lot is a part and running thence bounding on the centre of Hamilton Ave., south 71 degrees 55 minutes east 89 2/12 feet north 87 degrees 08 minutes east 147 feet more or less to the centre of an avenue 50 feet wide laid out parallel with and distant 175 feet at right angles southerly from the aforesaid ~~and~~ north westerly<sup>ly</sup> outline thence with and bounding on the centre of said 50 foot avenue south 45 degrees west 1684 feet more or less to intersect the western outline of the aforesaid whole tract thence with and bounding on the outlines of the aforesaid whole tract the three following courses and distances viz north 37 degrees 06 minutes west 177 8/12 feet to a stone north 45 degrees east 1494 feet to a stone and north 45 degrees east 15 10/12 feet to the place of beginning. Containing 5 61/100 acres of land more or less.

Being Section A on a plat of division of the whole tract of which the herein described lot is a part.

John C. Blackburn } March 11-1872  
 deed to } Recites - Case of W<sup>m</sup> C. Conine vs.  
 Anna J. Burrgan } Anna J. Burrgan-deed in  
 J. B. No 99 fol 109 &c } Circuit Court of Baldco April 29  
 1869- John C. Blackburn appointed

Trustee, to sell the real est in sd proceedings mentioned  
 Witnesseth for \$5078 <sup>12</sup>/<sub>100</sub> consideration ~

Beginning for the same at an old White Oak tree, standing  
 at the end of the fifth line of Deer Pit, and running  
 thence South  $39\frac{1}{4}^{\circ}$  East 49 fs to a stone

North  $50^{\circ}$  East 40  $\frac{1}{2}$  fs to a stone

North  $39\frac{1}{4}^{\circ}$  W 50 fs to a stone on the South East  
 side of the Belair Road thence still continuing the  
 same course North  $39\frac{1}{4}^{\circ}$  West 3 fs to the North West side  
 of said Road thence running and bounding on said  
 Road North  $50^{\circ}$  E until it intersects the land  
 conveyed by sd John C. Blackburn Trustee to John  
 J. Biddison by deed 11 Jan 1870 E. H. A. 69/226-  
 th run with and on sd ld the four foll courses

N.  $42\frac{1}{2}^{\circ}$  W. 12  $\frac{6}{10}$  p

N.  $34^{\circ}$  W 10 p

N  $17^{\circ}$  W 18  $\frac{6}{10}$  p

N.  $30\frac{1}{2}^{\circ}$  W 12 p to the N.  $79^{\circ}$  W  $34\frac{1}{2}$  p line of Philip Burrgan  
 Land, th run with and bounding on part of said line  
 $32\frac{1}{2}$  fs  $\pm$  to a stone at the end of said line thence

S.  $3\frac{1}{2}^{\circ}$  E 96  $\frac{1}{2}$  fs to a stone on the N.W side of the Belair  
 Road thence still S.  $3\frac{1}{2}^{\circ}$  E to the centre of said Road

thence South  $50^{\circ}$  W.  $1\frac{1}{2}$  fs and thence by a straight

line to the beg- except the family grave yard which fronts  
 Conty 31 a - 1 R  $\pm$  30 ft on Belair Rd and in depth 90 ft - see will  
 of Philip Burrgan 1843-

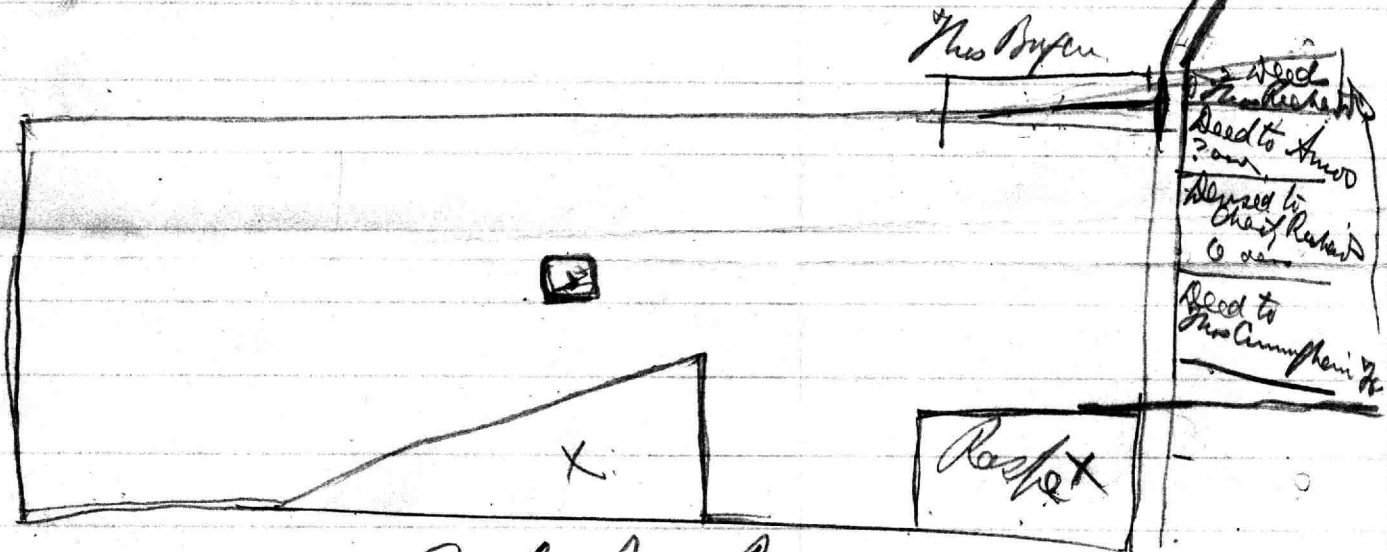
Beginning for the same at an old white oak tree the beginning of the land described in a deed from John C. Blackburn <sup>Trustee</sup> to Anna S. Burrgau, dated March 11-1872 and recorded among the Land Records of Baltimore in Liber J. B. No 99 fol 109 &c and running thence with and binding on the first line of said land as now surveyed with proper allowance to correct the variation of the needle South  $37^{\circ}12'$  East  $49\frac{1}{2}$  perches to a stone, heretofore placed as at the end of said line, thence ~~to~~ binding on the second line of said land North  $53^{\circ}16'$  East  $40\frac{9}{10}$  perches to as now run North  $53^{\circ}16'$  East  $40\frac{9}{10}$  perches to the third line of said land thence running with and binding on said line North  $35^{\circ}$  West  $52\frac{6}{100}$  perches to the centre of the Bel Air Turnpike Road thence binding on the centre of said Road South  $54^{\circ}03'$  West  $39\frac{38}{100}$  perches to ~~the given line~~ <sup>as shown</sup> on a point distant N.  $0^{\circ}31'$  E. 62 feet from the place of beginning it being in an outline of the whole land of which the ~~to~~ land now being described is part; and thence reversing said line and binding on said outline S.  $0^{\circ}31'$  East 62 feet to the place of beginning

Containing  $13\frac{4}{10}$  Acres of land

Being and comprising all the land described in ~~to~~ the deed from John C. Blackburn Trustee to Anna S. Burrgau which lies East of the centre of the Belair Road-

Nancy Johnson @ 47 acres  
 Allotted @ 1837.  
 by Amos Reade & others

Obadiah Sanders (acquired  $\frac{1}{7}$  by purchase)  
 & Ann, his wif, ent. to  $\frac{1}{7}$  as a day up  
 by Nancy J.



Bel Air House

Deed to Thos Cunningham, Esq. 9/11/8. 39/5 ✓  
 " " Thos Buryan. 9/11/8. 30/24 ✓  
 " " Thos Richard. 9/11/8. 32/390 ✓  
 " " Wm Jane Amos 9/11/8. 35/309 ✓  
 " " Thos Richard 9/11/8. 37/164 ✓

X Deed from Thos Buryan 9/11/8. 30/24 ✓

990  
 55  
 250

We hereby certify that we have surveyed the tract of land described by the above courses and distances and that the foregoing description comprises all the land west of Belair Road and south of Hamilton Ave allotted to Nancy Johnson by William Scharf, Joseph German and Amos Read, referees appointed by the devisees under the will of Thomas Burgan, deceased referred to in the proceedings in the above entitled cause except the portion conveyed to a certain other Thomas Burgan, the younger, by deed referred to in the proceedings in said cause, and comprises also the land conveyed by said last mentioned Thomas Burgan, the younger, to Obadiah Sanders by deed referred to in said proceedings in said cause and that the tract of land above described and included in the lines of the above description comprises the land allotted to said Nancy Johnson on west side of the Belair Road and south of Hamilton Ave., as shown on the plat of the division of the land of the said Thomas Burgan, deceased under said will filed in the case of Forrester et al, versus Forrester, et al, recorded among the Judicial Records of Baltimore County in Liber No. folio &c., in the Circuit Court for Baltimore County in Equity, excepting the small portion thereof conveyed by said Obadiah Sanders to said Thomas Burgan, the younger, by the deed referred to in ~~said~~ <sup>also accepting that portion thereof</sup> proceedings and lying north of Hamilton Ave., that the above description is the description of the land sold by the trustee in the above mentioned proceedings, and identical with the outlines of the plat filed by the trustee with this report of sale.

*A. B. & Co.*

We hereby certify that we have surveyed the tract of land described by the above courses and distances and that the <sup>West of Belair Road and South of Hamilton Ave</sup> foregoing description comprises all the land allotted to Nancy Johnson by William Scharf, Joseph German and Amos Read, referees appointed by the devisees under the will of Thomas Burgan, deceased, referred to in the proceedings in the above entitled cause, except the portion conveyed to a certain other Thomas Burgan, the younger, by deed referred to in the proceedings in said cause, and comprises also the land conveyed by said last mentioned Thomas Burgan, the younger, to Obadiah Sanders by deed referred to in said proceedings in said cause and that the tract of land above described and included in the lines of the above description comprises <sup>on West side of the Belair Road & South of Hamilton Ave</sup> the land allotted to said Nancy Johnson as shown on the plat of the division of the land of the said Thomas Burgan, deceased under said will filed in the case of Forrester et al. versus

Forrester, et al., recorded among the Judicial Records of Baltimore County in Liber No. folio &c., in the Circuit Court for Baltimore County in Equity, excepting the small portion thereof conveyed by said Obadiah Sanders to said Thomas Burgan, the younger, by the deed referred to in said proceedings, <sup>and excepting also the portion lying North of Hamilton Avenue</sup> and that the above description is the description of the land sold by the Trustee in the above mentioned proceedings, and identical with the outlines of the plat filed by the Trustee with his report of sale.

A. Bauldin, Sec  
Surveyor  
1906

also excepting that portion thereof

Rough Plat of the  
Division of Burgans  
Property on the Belle Air  
Road

1851

1729

102

1851

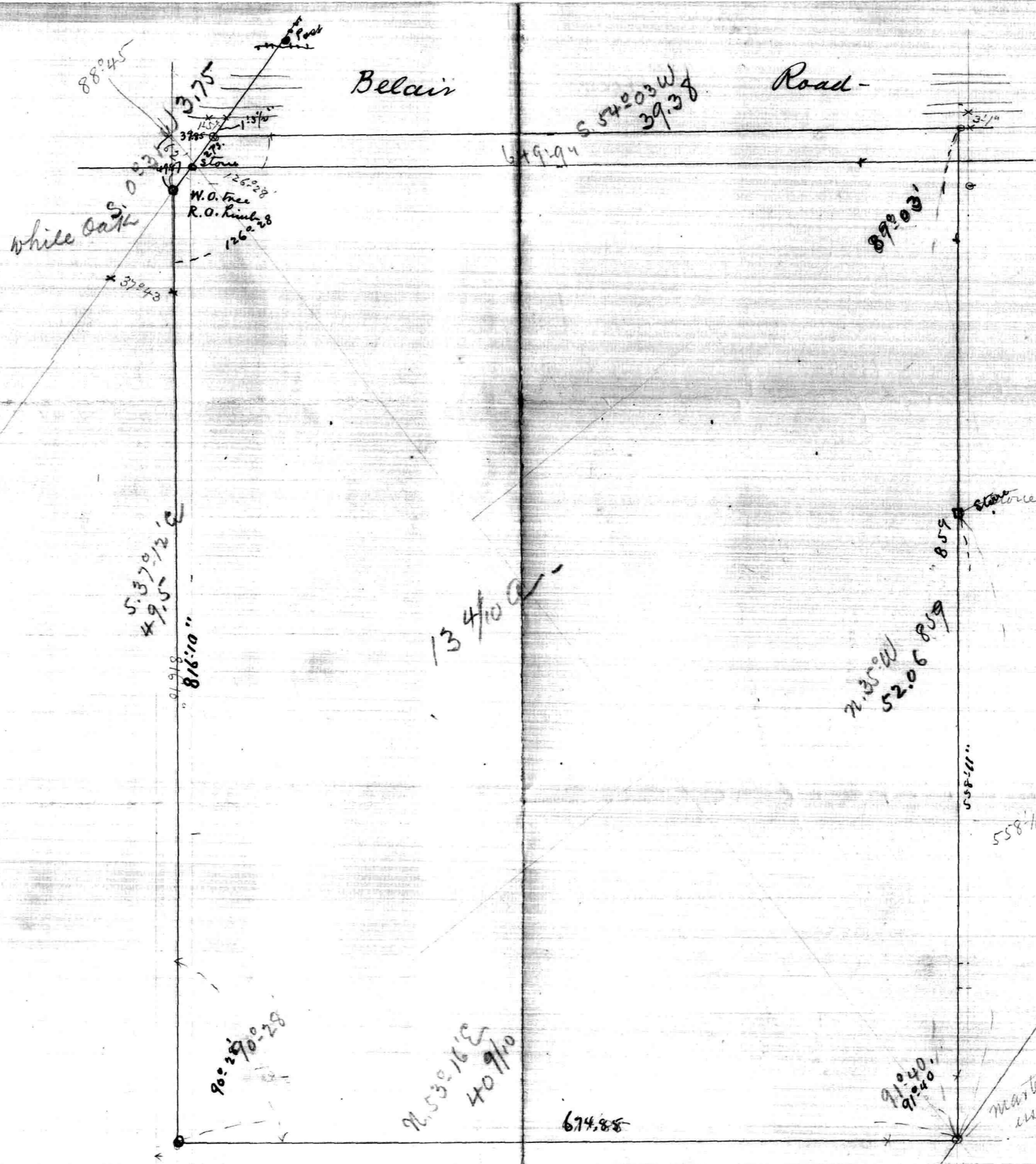
1729

0.3

near Latches Chapel

N 146

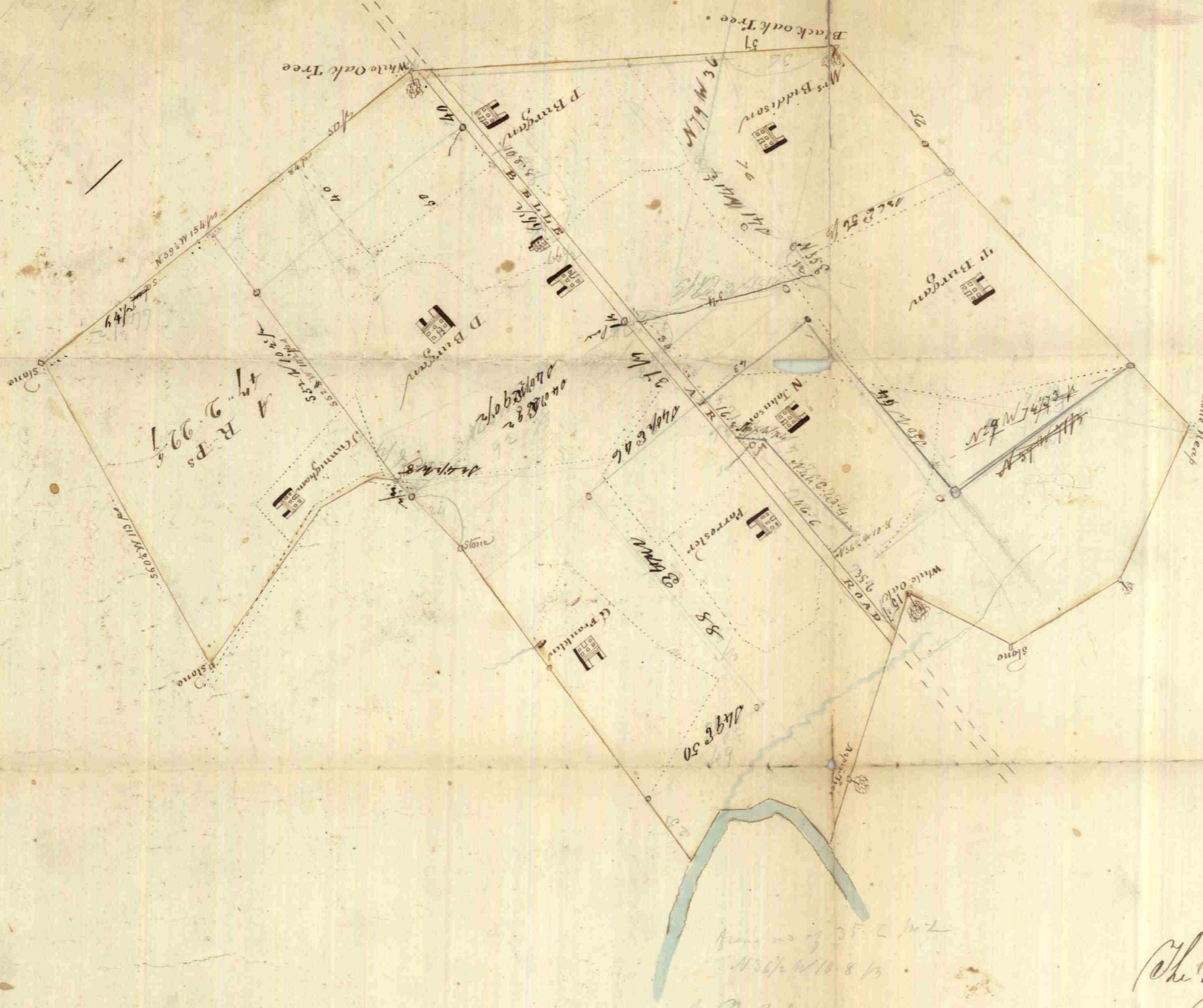
$$\begin{array}{r} 160 \\ \hline 640 \end{array}$$



Plot of Land bought by Peter  
Quick of Burgan heir for  
\$6000 - 1900-

Near 6 mile stone

No 5



There is contained within the yellow shaded lines  
 Of which there is on the North West side of the B. A Road 150 2 00  
 On the S. E. side of B. A Road 203 0 00

The whole Survey contains			
	A	R	P
	353	2	00
To be Divided into Eight parts viz			
	A	R	P
To Mr Biddison	20	0	00
P Bungan	47	2	2 6/7
The Bungan	47	2	2 6/7
Nancy Johnson	47	2	2 6/7
Stonester	47	2	2 6/7
E Chanklin	47	2	2 6/7
Debrah Bungan	47	2	2 6/7
John Cunningham	47	2	2 6/7
	353	2	00 0

Scale of 40 paces and such  
 A. A. Coulam

See Book 55/84  
 for field notes of this Survey  
 See Book No 23/49

49  
 64 1/2  
 113 1/2  
 154  
 40 1/2