

112

15  
0

Edwards Enlargement,  
Todds Range Letters,  
Montgomery Neck  
Lynch

---

Courses of the  
Ground to be  
conveyed by  
Thos Jackson  
a wife  
to Lynch  
Sept 20<sup>th</sup> 1850

9106  
713  

---

9819

C  
Courses comprising the Land to be conveyed by the  
Thomas & Cochran and wife to Lynch

All that piece or parcel of Land situated lying  
and being in the Ballinacorney County and being part of the tract  
of Land called "Mount Royal" and containing  
within the following rates bounds courses & distances  
that is to say Beginning for the same at a point 15 7/2 W  
20 feet and 10 feet from a stone standing in the East  
Side of the Road leading from Tappelen (which place  
of beginning is in the way @ 66 1/2 p. line of the Ground  
Leased by Fred. Diamond & wife to J. M. Cochran; and  
running thence N 8 3/4 E 129.0 p. to the N E corner of  
the stone wall of the Bunker Erected and in Cochran's Land  
thence along said wall S 89 1/4 E 37 1/2 p. to the E. corner, thence  
S 1 1/2 W 8 1/2 p.; S 13 1/4 E 6 p. S 9 W 4 p. to a post at  
the Gate in the Road as now made; thence northerly and westerly  
the following courses viz:

N 35 W 3 p.  
S 45 1/2 W 6 p.

S 54 W 7 p.

N 31 3/4 W 11 1/2 p. to the water  
the N 31 1/2 W 89 1/2 p. line of the former Lease to J. M. Cochran  
as aforesaid and then bounding as aforesaid

N 31 1/4 W 37 3/4 p. to the E. corner of line

& thence

N 87 1/2 E 41 1/2 p. to the E. corner

containing and lying out for 6 acres 3 Roods & 20 p. of  
Land more or less -

Surveyed August 19. 1850.

A. W. R. Bird

Thursday March 18<sup>th</sup> 1877 then S 48<sup>1/4</sup> E 6 1/2 feet  
run Lucas lot to beginning "

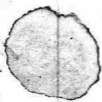
Began at a point S 8 E  
25 1/2 feet from S E  
Arm of Blacksmith  
Shop and run

N 31 1/2 E 133 8/12 feet to a  
hole in rock, 10 feet  
nothing from corner  
a fence building  
from hole in rock run

S 70 1/4 E 94 4/12 feet to corner  
White Oak stump,  
Corner between M. Galloway  
and Cochran. then  
run from hole in rock

N 65 W 100 feet betw  
stake then S 29 1/4 W  
98 9/12 feet to a fence  
between Lucas and  
York. then run  
W 30.25 E 43 feet

"Suns Lot"  
and  
other tracts  
Ball City



U.S. Census (1870), 2000, 1870, Reg on the side of a table of the

Memphis 1870 & 1880

There is a table of the names of the owners of the lots in Ball City  
in the 1870 census, and in the 1880 census, and in the 1890 census.

Ball City, Ohio, 1870, 1880, 1890

Galesburg Plain for Buyer & Perts Dec 20<sup>th</sup> 1670 by 9 at  
White oak at end of Go Hockmans land and run N E by N  
80, S by S 126, S by W 192 then to by for 100 a

"Colo Addition" for John Cole Sept 29, 1697 on the  
N side of Palapoco. Beg at White oak of Mounting and run  
with Mounting West 13 to White oak of Mounting, still West  
88 Red oak of Darby Park N E 146 to line of Colo Choice then  
with said land across Mounting Grade S E 40, S by E 1/2 E  
60 Red oak, S W 18, then to by for 67 a

Colo Choice John Cole July 28 1694

Beg at Red oak on side of hill descending to Swamp Run & run  
S by W 100. Red oak, S by E 12 white oak by main road  
West 58 Red oak, W by S 100 White oak N 16 W 114 Maple  
in Mounting glade N by W 1/2 W 113 Red oak by the Grade  
N E 80. White oak of John Attans, then with Attans line  
N 16 E 104 White oak in a valley S E 114 to White oak then to by  
for 499 a

Colo Harbour, Thos Cole (no ante)

Beg at Red oak of Mounting & run N W 320, N E 275 East  
320 then to by for 730 (See Falls & Colo Harbour & Todd's Range)

Falls & Colo Harbour, (for Edward Fish <sup>Sept 21 1726</sup> survey on Colo Harbour)

Beg at Red oak at end of West W line of Aber Mounting land & run  
N 47 W 86 mouth of gut West 58 over gut then bounding on West W  
branch S 60 W 12, N 83 W 12, N 50 W 16, N 83 W 12, N 60 E 34, S 70 W 20,  
S 42 W 20, S 15 W 22, S W 20, S 23 W 8, N E 39, W 75, N E 275  
E 320 then to by for 522 a (See Colo Harbour & Todd's Range)

"Linn Lot" and other tract  
Baltimore City

Resurvey April 8<sup>th</sup> 1706

Linn Lot (orig 20 July 1673), Beg on W side of a fall of the N<sup>o</sup>  
branch and in line of Danielson's & Oliver with sd land N<sup>o</sup> by N  
24 ps a Hickory of sd land, S<sup>o</sup> by 165-rod oak, Length 40, W<sup>o</sup> by N 45  
Rod by N<sup>o</sup> of branch, Length 100, S<sup>o</sup> by 20, N<sup>o</sup> by E  
40, S<sup>o</sup> E 80 span oak, S<sup>o</sup> to White oak in line of Homans Timber  
Arch with a bar of E 92 7/4 white oak of sd land, S<sup>o</sup> E 120 rod  
oak in line of it to branch then branch of an said branch by N<sup>o</sup> by  
North 50 rod oak, N<sup>o</sup> N 38, W<sup>o</sup> N 100, N<sup>o</sup> by W 50 locust post 4  
notches, N<sup>o</sup> E 45 rod oak in line of Thos. Coler land then 75  
to bounded ~~to~~ oak of Carter, then with sd land N<sup>o</sup> E 275  
to a oak, S<sup>o</sup> 65 to fall then by on fall to big g<sup>o</sup> for 200 a

Oliver's Branch 26 Jan'y 1722 (<sup>branch survey</sup> orig. Dec 22<sup>nd</sup> 1671) on W side  
of middle branch Big at Locust stump mound branch being by  
of Upton court then with sd land E 65 ps oak then with N<sup>o</sup> E 230  
to N<sup>o</sup> W branch <sup>at Red oak of U court</sup> then N<sup>o</sup> N 86, S<sup>o</sup> W by 70-70, W<sup>o</sup> N 34 to White  
oak of Homans Timber Arch in a small fork descending into the  
head of Homans Branch, then with this land S<sup>o</sup> W by W 34 ps to head  
of Homans branch then on sd branch 40 S<sup>o</sup> by W 70, S<sup>o</sup> 72 60  
S<sup>o</sup> 62 70, S<sup>o</sup> 50 60 to middle branch then S<sup>o</sup> 20 E 30. then to big for  
183 a

Homans Timber Arch Dec 17<sup>th</sup> 1668 on N side of middle  
branch, Beg at Red oak at mouth of small g<sup>o</sup> at that  
makes the entrance narrow of the tract called the Island and  
N<sup>o</sup> E by E 150, to oak, W<sup>o</sup> N 214, S<sup>o</sup> W by W 150, then to big for  
200 a

"Mountain Peak"  
Batter City



Aug<sup>t</sup> 26<sup>th</sup> 1662 for Alid<sup>r</sup> Mountain, "Mountains Creek"

Reg. 9 at marked White oak by little branch of run up  
N W branch West of 100 vva a cor to marked White oak  
on a point, N of E 320, E. S. E 100 Wm to big 9 bar 200 a

---

Texas Range, Janus Stock, July 19<sup>th</sup> 1896

Box 9 at White Oak in line of land formerly belonging to Almaric Thomas  
my late non-ship accession of Oct 24<sup>th</sup> 1895 - to be sent by train  
Calla Spring branch at 9<sup>th</sup> 25 - to be sent by train at 320<sup>th</sup>  
At 2 295 - be sent 2 320 be sent of the amount and the 9<sup>th</sup>  
with 2 of the amount sent to 1<sup>st</sup> class for 5-10 a (the 1<sup>st</sup> class Harbor

To Falls & Curro Harbor -

"Toda Range  
and  
other tracts

Dearby Hall (no date)

Logg at White oak on a point on the side of Hamletway Glade & run  
W by N 100. White oak stem W by N 81 Maple by branch falling W same  
Hall N W 62 Red oak N 146. N N E 74 White oak. E 32, Y 278,  
White oak in valley near head of Hamletway Glade then to log bar

300 a Gisto Inspection for Pic. Gist apt 20 1731

By at - Gum & Water oak on the side N. W. branch at or near end of  
N 50 p line of Lewis Lot and run N. E. 38. W. N. W. 12. N. N. W. 13  
Y. W. by N 11. W. N. W. 72 1/2. N. by W 28. Y 70 E 48. N 76 E 32, Y 62 E  
38, Y 15 E 54. then to log bar 24 a

Toads Range, James Todd, July 17<sup>th</sup> 1696

Begs at White Oak in line of land formerly belonging to Alexander Moun-  
tany but now in possession of Todd & runs W - to Red oak by branch  
Callow Spring branch still W 75 - to double White oak in all 320 p<sup>o</sup>  
N N E 275 - Red oak E 320 Red oak of Mountany on the 9<sup>th</sup>  
with a Mountany line to 1<sup>st</sup> town for 5-10 a [in Callow Harbour  
& Falls & Callow Harbour

"Toads Range  
and  
Callow tract

Edward's Enlargement  
and

~~of the~~ Tracts

~~105-505-13~~  
~~165-105-13~~

~~105-505-13~~  
~~165-105-13~~

475  
-165  
2375  
285-0  
475  
48375-

165-295-179  
165  
1300  
1155-

165-616-373  
165  
1295  
1130

3 down  
back

165-400-242  
330  
700  
400

165-1140-691  
990  
1500  
5841  
1485-

Edwards Enlargement

Edwards Lot

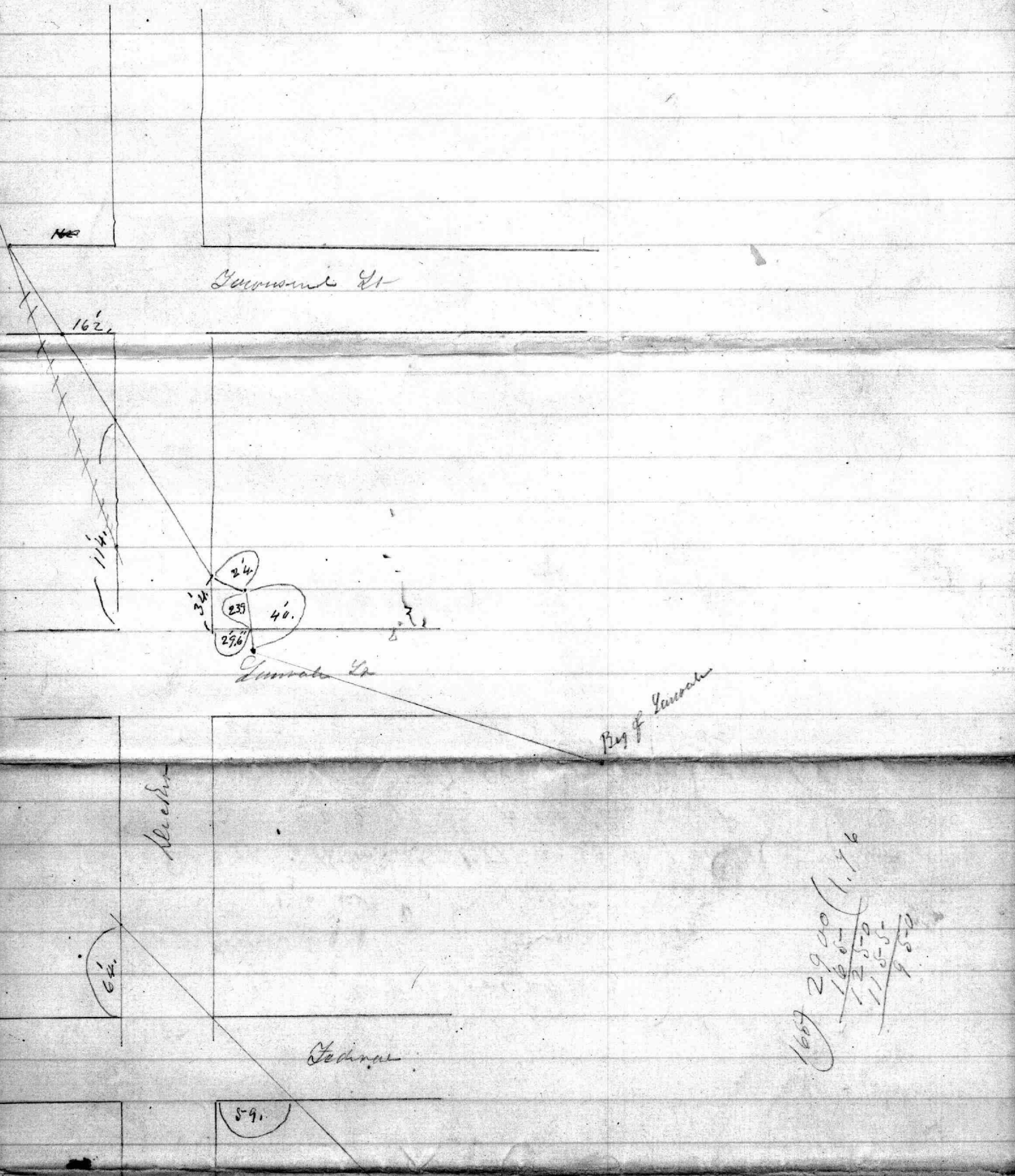
G. & G. F. Begg at Black oak in 99<sup>th</sup> line of E. Lot then with  
 same line S 9<sup>th</sup> W 106 to Black oak S 18<sup>th</sup> W 54, to woods of Geo Heek-  
 same line an same S 9<sup>th</sup> W 45, S E 32, to Mulberry at E 48  
 Heekings, E by S 25 - to Hales Falls at by W 48, N 42 E 42, S 50 E  
 36 N 42 E 55 - then to beg for 100

John McEhin } 6<sup>th</sup> June 1814 } Parts of Lot 5  
 to } W. G. 128 for 292 }  
 Wm McEhin }

S 75 E 2 7/8 S 15 W 25, N 77 1/2 W 33 to S point of a Rock  
 S 81 1/2 W 23, N 69 W 12 <sup>65</sup>/<sub>100</sub> to 1<sup>st</sup> line of G. P. an same  
 N 31 1/2 E 34 1/2 to beg the N 69 W 12 <sup>65</sup>/<sub>100</sub> ends on the E bank  
 of falls 23 4/10 from beg of G. P for 6. 25.

Water Co description of the above

S 75 E 2 7/8 along, S 15 W 25 - stone in line of mill Lot  
 an same S 81 1/2 W 23, N 69 W 11 1/2 to 1<sup>st</sup> line of G. P an  
 same to beg for S. 3. 33



$$\begin{array}{r} 1667 \ 2900 \\ - 1200 \\ \hline 1700 \\ - 550 \\ \hline 1150 \\ - 550 \\ \hline 600 \end{array}$$

$$\begin{array}{r} 475 \\ - 165 \\ \hline 2375 \\ - 2850 \\ \hline 475 \\ - 475 \\ \hline 0 \end{array}$$

$$\begin{array}{r} 165 \overline{) 400} \ 242 \\ \underline{330} \\ 700 \\ \underline{660} \\ 400 \end{array}$$

$$\begin{array}{r} 165 \overline{) 298} \ 179 \\ \underline{165} \\ 1300 \\ \underline{1185} \\ 1150 \end{array}$$

$$\begin{array}{r} 165 \overline{) 1140} \ 691 \\ \underline{990} \\ 1500 \\ \underline{1485} \\ 150 \end{array}$$

$$\begin{array}{r} 165 \overline{) 616} \ 373 \\ \underline{330} \\ 2860 \\ \underline{2820} \\ 400 \\ \underline{390} \\ 10 \end{array}$$

$$\begin{array}{r} 165 \overline{) 215} \ 13 \\ \underline{165} \\ 500 \\ \underline{495} \\ 50 \end{array}$$

$$\begin{array}{r} 165 \overline{) 501} \ 303 \\ \underline{330} \\ 1710 \\ \underline{1650} \\ 60 \end{array}$$

Measure the long count  
 and  
 steps in feet