

85

Ann's Arkow

|    |
|----|
| 20 |
| 1  |

Rochester

Ellis Folly

Charles Mistake

Cock Pit

Arnolds Arkow Enlarged

---

All on Beaver Run  
descending into Catapoco  
Falls

Land belonging to  
Estate of John Beaver

---

Rochester Resurveyed for John Will-  
 mott Nov. 23<sup>d</sup> 1761 lying in Baltimore  
 County Beginning at abounded red  
 oak standing at the end of eighty per-  
 ches in the view line of the Original  
 Survey and about 75 p from the begin-  
 ning trees thereof and running thence

- |                           |   |                     |      |
|---------------------------|---|---------------------|------|
| 1 N 30 W 40 p             | — | 1 M 30 1/2 W 40 p   |      |
| 2 West 20 p               | — | 2 S 89 1/2 W 20 p   |      |
| 3 S 75 W 80 p             | — | 3 S 74 1/2 W 80 p   |      |
| 4 N 28 W 140 p            | — | 4 N 28 1/2 W 140 p  |      |
| 5 N E 100 p               | — | 5 N 44 1/2 E 100 p  |      |
| 6 S 78 E 82 p             | — | 6 S 78 1/2 E 82 p   | 1320 |
| 7 N E 30 p                | — | 7 N 46 1/2 E 30 p   | 1600 |
| 8 N 16 W 80 p             | — | 8 N 16 1/2 W 80 p   | 1320 |
| 9 N 75 W 88 p             | — | 9 N 75 1/2 W 88 p   | 1280 |
| 10 N 35 W 22 p            | — | 10 N 35 1/2 W 22 p  |      |
| 11 N 61 1/2 W 45 p        | — | 11 N 62 W 45 p      |      |
| 12 West 16 p              | — | 12 S 89 1/2 W 16 p  |      |
| 13 N 53 W 47 p            | — | 13 N 53 1/2 W 47 p  | 770  |
| 14 N 86 W 140 p           | — | 14 N 86 1/2 W 140 p | 472  |
| 15 N 32 W 60 p            | — | 15 N 32 1/2 W 60 p  | 782  |
| 16 S 68 W 40 p            | — | 16 S 67 1/2 W 40 p  |      |
| 17 N 22 W 40 p            | — | 17 N 22 1/2 W 40 p  |      |
| 18 North 28 p             | — | 18 N 1/2 W 28 p     |      |
| 19 N 30 E 40 p            | — | 19 N 49 1/2 E 40 p  |      |
| 20 N 34 W 46 p            | — | 20 N 32 1/2 W 46 p  | 7    |
| 21 N 43 W 98 p            | — | 21 N 43 1/2 W 98 p  |      |
| 22 S 20 W 176 p           | — | 22 S 19 1/2 W 176 p | 2    |
| 23 N 65 W 70 p            | — | 23 N 65 1/2 W 70 p  |      |
| 24 N 75 W 80 p            | — | 24 N 78 1/2 W 80 p  |      |
| 25 N 30 E 116 p           | — | 25 N 49 1/2 E 116 p |      |
| 26 N 40 W 28 p            | — | 26 N 40 1/2 W 28 p  |      |
| 27 S 66 W 34 p            | — | 27 S 64 1/2 W 34 p  |      |
| 28 S W 80 p               | — | 28 S 44 1/2 W 80 p  |      |
| 29 S 15 W 157 p           | — | 29 S 14 1/2 W 157 p | 761  |
| 30 S E 64 p               | — | 30 S 48 1/2 E 64 p  |      |
| 31 West 24 p              | — | 31 S 89 1/2 W 24 p  | 26   |
| 32 S 20 E 66 p            | — | 32 S 19 1/2 E 66 p  |      |
| 33 N 7 E 65 p             | — | 33 N 16 1/2 E 65 p  |      |
| 34 East 84 p              | — | 34 N 89 1/2 E 84 p  |      |
| 35 S 18 W 132 p           | — | 35 S 17 1/2 W 132 p |      |
| 36 N 100 30 p             | — | 36 N 45 1/2 W 30 p  |      |
| 37 S 5 W 32 p             | — | 37 S 2 1/2 W 32 p   |      |
| 38 S 63 E 61 p            | — | 38 S 63 1/2 E 61 p  |      |
| 39 N 77 E 74 p            | — | 39 N 76 1/2 E 74 p  |      |
| 40 S 18 E 10 p            | — | 40 S 18 1/2 E 10 p  | 761  |
| 41 N 79 E 47 p            | — | 41 N 78 1/2 E 47 p  | 885  |
| 42 N 30 E 68 p            | — | 42 N 29 1/2 E 68 p  | 1646 |
| 43 N 76 E 38 p            | — | 43 N 75 1/2 E 38 p  | 885  |
| 44 <del>N 76</del> W 66 p | — | 44 S 16 W 66 p      |      |
| 45 S 30 E 29 p            | — | 45 S 30 1/2 E 29 p  |      |
| 46 S 60 W 40 p            | — | 46 S 59 1/2 W 40 p  |      |
| 47 N 30 W 48 p            | — | 47 N 30 1/2 W 48 p  |      |

48 179 W 50/p — 48 178 1/2 W 50/p  
 49 18 E 43/p — 49 18 1/2 E 43/p  
 50 170 E 40/p — 50 170 1/2 E 40/p  
 51 16 W 62/p — 51 15 1/2 W 60/p  
 52 147 E 36/p — 52 147 1/2 E 36/p  
 53 117 E 4 1/2 — 53 117 1/2 E 4 1/2  
 54 181 E 18/p — 54 181 1/2 E 18/p  
 55 148 E 100/p — 55 148 1/2 E 100/p  
 56 153 W 60/p — 56 152 1/2 W 60/p  
 57 162 W 16/p — 57 162 1/2 W 16/p  
 58 1 W 48/p — 58 1 1/2 W 48/p  
 59 132 W 20/p — 59 132 1/2 W 20/p  
 60 1 W 80/p — 60 1 1/2 W 80/p  
 61 170 E 60/p — 61 170 1/2 E 60/p  
 62 152 E 80/p — 62 151 1/2 E 80/p  
 63 110 W 140/p — 63 109 1/2 W 140/p  
 64 165 W 80/p — 64 165 1/2 W 80/p  
 65 130 W 60/p — 65 129 1/2 W 60/p  
 66 West 328/p — 66 189 1/2 W 328/p  
 67 1 W 92/p — 67 1 1/2 W 92/p  
 68 158 W 40/p — 68 158 1/2 W 40/p  
 69 180 W 48/p — 69 180 1/2 W 48/p  
 70 147 W 80/p — 70 146 1/2 W 80/p  
 71 120 W 200/p — 71 119 1/2 W 200/p  
 72 188 W 80/p — 72 188 1/2 W 80/p  
 73 116 E 133/p — 73 115 1/2 E 133/p  
 74 148 1/2 W 114/p — 74 149 W 114 W  
 75 18 W 100/p — 75 17 1/2 W 100/p  
 76 130 W 114/p — 76 129 1/2 W 114/p  
 77 188 E 35/p — 77 187 1/2 E 35/p  
 78 130 W 30/p — 78 129 1/2 W 30/p  
 79 West 40/p — 79 149 1/2 W 40/p  
 80 17 W 120/p — 80 16 1/2 W 120/p  
 81 146 W 22/p — 81 145 1/2 W 22/p  
 82 115 W 160/p — 82 114 1/2 W 160/p  
 83 177 W 32/p — 83 176 1/2 W 32/p  
 84 130 E 40/p — 84 130 1/2 E 40/p  
 85 South 80/p — 85 1 1/2 E 80/p  
 86 140 E 12/p — 86 140 1/2 E 12/p  
 87 175 E 34/p — 87 174 1/2 E 34/p  
 88 South 30/p — 88 1 1/2 E 30/p  
 89 140 W 60/p — 89 139 1/2 W 60/p  
 90 110 E 120/p — 90 110 1/2 E 120/p  
 91 177 E 34/p — 91 177 1/2 E 34/p  
 92 165 E 20/p — 92 165 1/2 E 20/p  
 93 172 E 234/p — 93 169 1/2 E 234/p  
 94 18 E 60/p — 94 17 1/2 E 60/p  
 95 1 E 80/p — 95 1 1/2 E 80/p  
 96 123 E 64/p — 96 122 1/2 E 64/p  
 97 West 320/p — 97 1 1/2 W 320/p  
 98 122 E 200/p — 98 121 1/2 E 200/p  
 99 East 90/p — 99 189 1/2 E 90/p  
 100 134 E 80/p — 100 133 1/2 E 80/p  
 101 185 E 64/p — 101 184 1/2 E 64/p  
 102 120 W 88/p — 102 119 1/2 W 88/p  
 103 144 E 28/p — 103 143 1/2 E 28/p  
 104 170 E 100/p — 104 169 1/2 E 100/p

105 158 E 90/p — 105 158 1/2 E 90/p  
 106 121 E 140/p — 106 120 1/2 E 140/p  
 107 186 E 221/p — 107 186 E 221/p  
 108 119 W 19/p — 108 119 1/2 W 19/p  
 109 152 W 40/p — 109 152 1/2 W 40/p  
 110 115 E 270/p — 110 114 1/2 E 270/p  
 111 129 E 72/p — 111 128 1/2 E 72/p  
 112 159 E 30/p — 112 159 1/2 E 30/p  
 113 130 E 20/p — 113 130 1/2 E 20/p  
 114 120 W 36/p — 114 119 1/2 W 36/p  
 115 120 E 34/p — 115 120 1/2 E 34/p  
 116 130 E 83/p — 116 130 1/2 E 83/p  
 117 140 W 60/p — 117 139 1/2 W 60/p  
 118 189 E 125/p — 118 189 1/2 E 125/p  
 119 122 W 20/p — 119 122 1/2 W 20/p  
 120 172 W 71/p — 120 172 1/2 W 71/p  
 121 14 E 30/p — 121 110 1/4 E 30/p  
 122 1 E 34/p — 122 133 1/4 E 34/p  
 123 1 E 60/p — 123 145 1/2 E 60/p  
 124 1 E 40/p — 124 16 1/8 E 40/p  
 125 1 E 26/p — 125 145 1/2 E 26/p  
 126 162 E 108/p — 126 161 1/2 E 108/p  
 127 134 W 134/p — 127 134 1/2 W 134/p  
 128 163 W 80/p — 128 163 1/2 W 80/p  
 129 145 W 64/p — 129 145 1/2 W 64/p

Wherewith amount due to the Regent  
 century 1867 avar off avar more  
 oblige

Willems  
 Williamson  
 Willems

59  
 9000  
 19000

Ellis Holly's resurvey on back Part  
made for Joseph Ellis the 30<sup>th</sup> of  
November 1773 - Beginning at the beginning  
of a tract of land called Charles Mistake  
which stand about S 31 E 28 p from the  
beginning trees of the Virginia tract and among  
them

- 1 N 76 70 p — 1 N 6 1/2 E 70 p
- 2 N 36 E 40 p — 2 N 35 1/2 E 40 p
- 3 N 26 W 73 p — 3 N 26 1/2 W 73 p
- 4 N 29 E 72 p — 4 N 28 1/2 E 72 p
- 5 N 6 1/2 W 24 p — 5 N 68 W 24 p B
- 6 S 29 W 111 p — 6 S 28 1/2 W 111 p
- 7 S 2 E 20 p — 7 S 1/2 E 20 p
- 8 S 25 E 20 p — 8 S 25 1/2 E 20 p
- 9 S 16 W 160 p — 9 S 15 1/2 W 160 p
- 10 S 32 E 40 p — 10 S 32 1/2 E 40 p
- 11 S 5 E 40 p — 11 S 5 1/2 E 40 p
- 12 S 58 E 20 p — 12 S 58 1/2 E 20 p
- 13 N 45 E 100 p — 13 N 45 1/2 E 100 p
- 14 N 64 E 110 p — 14 N 64 1/2 E 110 p
- 15 N 80 W 4 p — 15 N 80 1/2 W 4 p
- 16 N 5 E 28 p — 16 N 5 1/2 E 28 p
- 17 N 88 E 60 p — 17 N 87 1/2 E 60 p
- 18 N 23 W 32 p — 18 N 23 1/2 W 32 p
- 19 N 47 W 34 p — 19 N 47 1/2 W 34 p
- 20 N 24 W 40 p — 20 N 24 1/2 W 40 p
- 21 S 35 W 25 1/2 p — 21 S 34 1/2 W 25 1/2 p
- 22 S 50 E 30 p — 22 S 50 1/2 E 30 p
- 23 S 40 W 60 p — 23 S 39 1/2 W 60 p
- 24 N W 67 p — 24 N 67 1/2 W 67 p

then to the beginning containing 209 acres  
of land more or less

Copies from certified to  
Joseph Allahan Red Top

Courses of Part of the Resurvey on Rochester

from the end of the 164 p on the 110<sup>th</sup> line

- 1 S 74 E 18 p — 1 S 74 1/2 E 18 p
- 2 N 36 E 40 p — 2 N 35 1/2 E 40 p
- 3 N 26 W 73 p — 3 N 26 1/2 W 73 p A
- 4 N 29 E 72 p
- 5 S 59 E 30 p
- 6 S 30 E 20 p
- 7 S 20 W 36 p
- 8 S 20 E 34 p
- 9 S 50 E 83 p
- 10 S 40 W 60 p
- 11 S 72 1/2 E 49 p
- 12 East 97 p
- 13 South 46 p
- 14 S 20 W 90 p
- 15 S 37 E 93 p
- 16 N 62 E 60 p
- 17 N 57 W 37 p
- 18 N 4 E 30 p
- 19 N 48 E 36 p

on the 73 p line of the survey  
A at 49 p on the 270 p line at  
22 8 p on the 270 p line  
B at 8 p on the 24 p line and 34 1/2 W 73 p  
the end of the 270 p line

then went to 258 p on the 270 p line and in  
176 3/4 W 90 p then N 84 W 16 8 p to the end  
of the 165 1/2 W 80 p line of Rochester  
and 1/2 degree allowance for each

Monday closed the survey on the 1<sup>st</sup> of  
the plan staff

Monday commenced for Defendant run  
from the end of the 16 p line N 15 1/2 E  
1/2 N 55 1/2 W 43 p to the beginning of the  
Robertson end measured by A Wampler

2

232

1

270

135

674-

Partnership  
Alexander S. Bouldin  
Surgeon of Bouldin 59

Long  
v  
Beaver.

Order for Survey.

Accepted  
for record

Long  
vs  
Beard.

Baltimore County Court  
Reference Scket.

This case being referred to us under a Rule of  
Court, & it being necessary & expedient,  
according to the representation of the parties,  
that a Survey should be made, We do  
humbly request the Surveyor of Baltimore  
County, to make such Survey, agreeably  
to the Instructions of the parties or  
their Counsel, to be given to said Surveyor,  
& when completed, to return a plat,  
directed to us

May 26th 1834.

In Witness Whereof,  
Charles F. Dwyer,  
Clerk.

The property is near Westman's Sea, but in  
Baltimore County. John Keeble Cashier of  
the Westman's Bank, will show the  
land, & give the necessary instructions  
to the Deput Surveyor on the part of  
the Plaintiff. I directed to J. M.



Long  
vs  
Bear

Saleb Stansbury aged about 79 years after having been duly sworn on the Holy Evangelij of Almighty God Deponeeth and saith that he has known the red oak tree now shown by him to the surveyor about forty years and that he has repeatedly seen surveyors run from said tree when making survey of the tract of ~~the~~ tract of land called Rochester and the other lands in the neighborhood and always understood the same tree to be the Beginning of the tract of land called Rochester

Saleb Stansbury

Aug. 3<sup>rd</sup> 1834

Watrup

Henry Bouldin

Phillip Gore } Deed dated 21<sup>st</sup> Sept. 1829.  
Mary W. Gitt } N.Y. N<sup>o</sup> 201. folio 395 ff.  
Heffer by marriage }  
Heffer & wife }

Adam Baker } Deed dated 23<sup>rd</sup> of December 1830  
} For all that part of a tract of land or lot  
} N<sup>o</sup> 14 which is contained within the follow-  
} ing description Viz Beginning at the end of  
the 9<sup>th</sup> line of a tract of land called Adams contenance and run-  
ning thence bounding on said land as run with one degree allow-  
-ance for variation, N 18° 30' ps S 35° 11' 15" ps then N 61° 10' 29' ps  
to the end of the N 54° 10' 54' ps line of a tract of land called Story  
point and thence with a straight line to the beginning  
containing 3. 2. 18 of said more or less  
True Extract from Liber W. G.  
N<sup>o</sup> 200 folio 429 ff.

A Treatise of  
Charles Mestake, Lock Pitt  
Rochester and Arnold Arbou  
Enlarged

---

Charles Mistake Surveyed for Schuonuch the 29<sup>th</sup> May 1758 Requiring at a bounded white oak standing near the head of a small Branch descending into the Beaver run which descends into the main falls of Patapsco River and running thence N 7 E 70 p<sup>ts</sup> N 36 E 40 p<sup>ts</sup> N 26 W 73 p<sup>ts</sup> N 29 E 72 p<sup>ts</sup> S 9 E 30 p<sup>ts</sup> S 30 E 20 p<sup>ts</sup> S 20 W 36 p<sup>ts</sup> S 20 E 34 p<sup>ts</sup> S 30 E 83 p<sup>ts</sup> S 40 W 60 p<sup>ts</sup> N W 57 p<sup>ts</sup> then with a straight line to the beginning containing and laid out for 100 acres of Land more or less

Chas. Eckhart

Signe Jno Callahan Reg<sup>l</sup> Office

Cock Pit Surveyed for Joseph Ellis the 12<sup>th</sup> p<sup>ts</sup> 1771

Requiring at two bounded white oaks standing on the side of a hill and on the west side of Charles Branch a draught of Beaver run and running thence S 48 E 30 p<sup>ts</sup> S 82 p<sup>ts</sup> S 75 E 60 p<sup>ts</sup> S 17 W 16 p<sup>ts</sup> S 10 W 80 p<sup>ts</sup> S 45 W 40 p<sup>ts</sup> N 26 W 30 p<sup>ts</sup> and thence by a straight line to the beginning containing and laid out for 55 acres more or less

Chas. Eckhart

Signe Jno Callahan Reg<sup>l</sup> Office

Rochester resurveyed for Charles Carroll of Carrollton Esquire November 20<sup>th</sup> 1773 and patented to him May 31<sup>st</sup> 1780

Lying in Baltimore County Requiring at the beginning of the original Survey and running thence N 30 W 40 p<sup>ts</sup> W 20 p<sup>ts</sup> S 75 W 80 p<sup>ts</sup> N 28 W 40 p<sup>ts</sup> N E 100 p<sup>ts</sup> S 78 E 86 p<sup>ts</sup> N 43 E 42 p<sup>ts</sup> N 15 1/2 W 91 p<sup>ts</sup> S 30 W 11 p<sup>ts</sup> N W 30 p<sup>ts</sup> N 86 W 38 p<sup>ts</sup> N 63 1/2 W 120 p<sup>ts</sup> N 55 E 26 p<sup>ts</sup> N 48 W 48 p<sup>ts</sup> S 8 W 30 p<sup>ts</sup> to the Original and running thence N 66 W 20 p<sup>ts</sup> N 10 W 12 p<sup>ts</sup> N 80 W 72 p<sup>ts</sup> N 40 W 32 p<sup>ts</sup> N E 20 p<sup>ts</sup> N 34 W 30 p<sup>ts</sup> N 55 W 47 p<sup>ts</sup> to the Original N 32 W 46 p<sup>ts</sup> N 63 W 60 p<sup>ts</sup> N 26 E 80 p<sup>ts</sup> S 37 W 75 p<sup>ts</sup> to the Original N 16 W 43 p<sup>ts</sup> N 40 E 30 p<sup>ts</sup> N 50 W 12 p<sup>ts</sup> N 27 E 19 p<sup>ts</sup> N 10 E 63 p<sup>ts</sup> N 38 E 140 p<sup>ts</sup> N 32 W 20 p<sup>ts</sup> S 65 W 40 p<sup>ts</sup> S 39 W 80 p<sup>ts</sup> S 20 W 30 p<sup>ts</sup> S 2 E 44 p<sup>ts</sup> S 44 W 46 p<sup>ts</sup> S 10 W 34 p<sup>ts</sup> S 52 W 20 p<sup>ts</sup> S 5 E 63 p<sup>ts</sup> S 40 W 35 p<sup>ts</sup> N 73 W 29 p<sup>ts</sup> S 39 W 20 p<sup>ts</sup> S 6 W 60 p<sup>ts</sup> S 2 W 40 p<sup>ts</sup> N 75 W 63 p<sup>ts</sup> N 39 E 121 p<sup>ts</sup> N 73 W 73 p<sup>ts</sup> S 65 W 1 p<sup>ts</sup> to the Original then S W 80 p<sup>ts</sup> S 13 W 157 p<sup>ts</sup> S E 36 p<sup>ts</sup> S 32 W 15 p<sup>ts</sup> S E 37 p<sup>ts</sup> W 18 p<sup>ts</sup> S 20 E 36 p<sup>ts</sup> N 17 E 66 p<sup>ts</sup> E 84 p<sup>ts</sup> S 18 W 35 p<sup>ts</sup> E 24 p<sup>ts</sup> S 18 W 132 p<sup>ts</sup> N W 32 p<sup>ts</sup> S 1 N 78 p<sup>ts</sup> S 63 E 61 p<sup>ts</sup> N 77 E 74 p<sup>ts</sup> S 18 E 52 p<sup>ts</sup> N 84 E 27 p<sup>ts</sup> S 70 E 20 p<sup>ts</sup> N 34 1/2 E 24 p<sup>ts</sup> N 30 W 31 p<sup>ts</sup> N 30 E 68 p<sup>ts</sup> N 76 E 38 p<sup>ts</sup> S 18 W 63 p<sup>ts</sup> S 30 E 29 p<sup>ts</sup> S 40 W 40 p<sup>ts</sup> S 34 1/2 W 39 p<sup>ts</sup> S 4 W 60 p<sup>ts</sup> S 47 E 36 p<sup>ts</sup> S 25 W 11 p<sup>ts</sup> S 81 E 18 p<sup>ts</sup> S 48 E 100 p<sup>ts</sup> S 33 W 40 p<sup>ts</sup> S 162 W 16 p<sup>ts</sup> S W 48 p<sup>ts</sup> N 52 W 70 p<sup>ts</sup> S 48 W 116 p<sup>ts</sup> S 57 E 49 p<sup>ts</sup> S 3 W 29 p<sup>ts</sup> N 83 W 30 p<sup>ts</sup> S E 25 p<sup>ts</sup> S 36 W 13 p<sup>ts</sup> to the Original West 270 p<sup>ts</sup> S 1 W 87 p<sup>ts</sup> S 13 1/2 E 28 p<sup>ts</sup> S 74 W 106 p<sup>ts</sup> S 47 W 12 p<sup>ts</sup> S 20 W 214 p<sup>ts</sup> N 84 W 80 p<sup>ts</sup> N 16 E 103 p<sup>ts</sup> N 84 W 75 p<sup>ts</sup>

S 86 W 100 p  
 S 30 W 114 p S 73 E 51 p S 30 W 12 p S 73 E 14 p S 20 W 30 p W 40 p S 17 W 120 p  
 S 46 W 22 p S 15 W 140 p S 77 W 40 p S 30 E 40 p S 90 p S 11 E 79 p to the Original N. E  
 34 p M 4 W 84 p M 60 E 68 p E 115 p S 52 W 100 p S 27 W 70 p S 12 E 32 p to the Orig-  
 -inal N 70 E 178 p to the end of the ninety third line of the Original then N 80 E  
 23 p M E 80 p M 23 E 64 p M 320 p M 22 E 200 p E 90 p M 34 E 80 p M 85 E 64 p  
 S 20 W 88 p S 44 E 28 p M 70 E 100 p S 58 E 90 p M 21 E 140 p S 41 E 10 p M 53 E 70 p  
 M 86 E 162 p M 19 W 19 p M 45 W 36 p to the end of the One hundred and eighth  
 line of the Original then M 32 W 40 p M 15 E 114 p S 74 E 18 p M 36 E 40 p M 26 W 73 p  
 M 29 E 72 p S 59 E 50 p S 30 E 20 p S 20 W 36 p S 20 E 34 p S 30 E 83 p S 40 W 10 p S 72 E  
 49 p E 97 p S 46 p S 20 W 90 p S 57 E 95 p M 62 E 60 p M 37 W 37 p M 4 E 30 p M 48 E  
 36 p M W 50 p S W 12 p M 40 W 77 p M M W 20 p M 72 E 66 p M 4 E 35 p M 64 E  
 34 p S E 60 p E 4 S 40 p S E 66 p S 85 E 18 p M 75 E 20 p M 8 E 84 p M 70 E 72 p  
 M 72 W 68 p M 102 p M 63 W 80 p M W 64 p and then by a straight line to the beg-  
 -inning containing 470 1/2 acres more or less

True Extract

Geo. G. Brewster's Office

Arnolds Arbour Enlarged Accurately for Joseph Arnold the 1<sup>st</sup> day of January  
 1754 Beginning at the Original Survey N 73 abounded chequer and abounded against  
 oak standing on a branch descending into the main falls of Patuxent River and ending  
 there S 81 E 18 p S 48 E 105 p S 53 W 60 p M 62 W 16 p S W 48 p M 32 W 70 p S 48 W  
 104 p M 37 W 48 p M 18 E 120 p S 81 W 80 p M 6 W 72 p M 29 W 37 p East 60 p M 70 E 40 p  
 M 38 E 20 p East 40 p M 32 E 7 p M 84 E 40 p S 70 E 20 p S W 60 p S 47 E 36 p and  
 then by a straight line to the Beginning containing and laid out for 270 acres more  
 or less

The above copies from books of courses belonging to the late Col John Wamper  
 and now in the possession of A Wampler Esq by A. Bouldin

Copy deed

Carroll

A.

Beaver

at Wolf

Dec

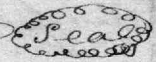
\$1.37

Charles Carroll of Carrollton } This Indenture made  
Deed So } this thirtieth day of  
~~James~~ <sup>Susanna</sup> Beaver and others } March in the year of our  
Lord one thousand, eight hundred and fifteen  
between Charles Carroll of Carrollton Esquire of the  
One part and Susanna Beaver Widow of John Beaver  
and Mary Beaver, John Beaver, Susanna Beaver, Elias  
Beaver, Catharine Beaver, Rachel Beaver and Esther  
Beaver Children of John Beaver, of Baltimore County,  
of the other part: Whereas John Beaver late of Bal-  
-more County deceased by his last will and Testament  
bearing date the Eleventh day of October 1814. did direct  
that the Lands which he held of Charles Carroll of  
Carrollton be conveyed to his wife and seven children  
all before named share and share alike, Now This  
Indenture Witnesseth that the said Charles Car-  
-roll of Carrollton in compliance with the  
said Will and for and in consideration of the sum  
of four hundred and thirty seven pounds, nine shillings  
and seven pence to him paid, the receipt whereof he  
doth hereby acknowledge hath granted, bargained  
and sold, aliened and confirmed and by these pres-  
-ents doth grant, bargain and sell, alien and confirm  
unto the said Susanna Beaver, Mary Beaver, John  
Beaver, Susanna Beaver Junior, Elias Beaver, Cath-  
-arine Beaver, Rachel and Esther Beaver their heirs  
and assigns forever part of a tract of Land, lying in  
Baltimore County called "Rockister," Beginning at the  
end of sixty nine perches on the seventh line of  
Arnold's Arbour enlarged and running thence  
South

South sixty degrees east Three hundred and Twenty two  
perches south fifteen degrees west eighty three perches  
<sup>west three hundred and six perches north fifty seven degrees</sup>  
North fifty four degrees, west fifty Three and a half  
perches and thence with a straight line to the begin-  
ning, containing One hundred and thirty acres of Land  
more or less. And all that part of a tract of Land lying  
in Baltimore County called "Rochester" Beginning  
at the end of the first line of Arnold's Arbour enlarged  
and running thence south forty eight degrees east  
One hundred perches, south fifty three degrees west  
sixty perches North sixty two degrees west sixteen  
perches south forty five degrees west forty eight perches  
North fifty two degrees west seventy perches South  
forty eight degrees west sixty nine perches, South  
sixty degrees East three hundred and Twenty two  
perches North fifteen degrees east eighty one perches  
South seventy four degrees east ten perches, North  
seven degrees, east fourteen perches North thirty  
six degrees east forty perches North Twenty six  
degrees west seventy three perches North fifty one  
and an half degrees west twenty seven and an  
half perches North forty six degrees west fifty eight  
perches, North thirty five degrees west thirty six  
perches North forty two degrees west eighty six  
perches North sixty five degrees west three perches  
and then by a straight line to the beginning  
containing two hundred and <sup>seventy</sup> eight acres of Land  
More or less. And also all that part of a tract of  
Land lying in Baltimore County called "Rochester"  
Beginning at a post and running thence North  
fifty four degrees west Three hundred and six  
perches



perches south three degrees west twenty nine perches  
north eighty three degrees west thirty perches, south  
one degree east twenty eight perches, south thirty six  
degrees west fifteen perches, west one perch, south twenty  
six degrees, east one hundred and eighty nine perches, east  
fifty perches, south one degree east nine and an half perches,  
North twenty one degrees, east twenty five perches, north  
eighty six and an half degrees east one hundred and  
four perches and then by a straight line to the beginning  
containing two hundred and thirteen and an half  
acres <sup>of Land</sup> more or less with the appurtenances thereunto belong-  
ing, and all the estate, right, title, claim and demand  
whatsoever of him the said Charles Carroll of Carrollton  
in and to the same To have and to hold the said three  
parcels of Land and premises with the appurtenances  
thereof unto the said Susanna Beaver, <sup>Mary Beaver,</sup>  
John Beaver, Susanna Beaver Junior, <sup>Catherine Beaver,</sup> Ra-  
chel Beaver, and Esther Beaver, their heirs and assigns  
to the only proper use and behoof of the said Susan-  
na Beaver, Mary Beaver, John Beaver, Susanna Beaver  
Junior, Elias Beaver, Catherine Beaver, Rachel Beaver  
and Esther Beaver, their heirs and assigns forever as  
tenants in common and not as joint tenants. And the  
said Charles Carroll of Carrollton for himself his heirs exec-  
utors and administrators, doth hereby covenant and agree  
to and with the said Susanna Beaver, Mary Beaver, John  
Beaver, Susanna Beaver Junior, Elias Beaver, Catherine  
Beaver, Rachel Beaver and Esther Beaver their heirs and  
assigns, that he the said Charles Carroll of Carrollton  
and his heirs the said Land and premises against  
him and his heirs and against all persons claiming

or to claim by, from or under him or them unto  
the said Susanna Beaver, Mary Beaver, John Bea-  
-ver, Susanna Beaver Junior, Elias Beaver, Catherine  
Beaver, Rachel Beaver and Esther Beaver, their  
heirs and assigns shall and will warrant and  
forever defend by these presents In Witness  
whereof the said Charles Carroll of Carrollton  
hath hereto set his hand and seal, the day and  
year first above written Ch Carroll of Carrollton 

Signed, sealed and delivered in Baltimore County  
presence of Edw. Johnson R. Caton & town On this 30<sup>th</sup>  
day of March 1815 came Charles Carroll of Carrollton  
before us two Justices of the peace for Baltimore County  
and acknowledged the foregoing instrument of  
writing to be his act and deed according to the true  
intent and meaning thereof Edw. Johnson

Received to be recorded the 30<sup>th</sup> } Rich<sup>d</sup> Caton  
day of March 1815 same day recorded and examined p. Mr. Gibson Ch  
In Testimony that the foregoing is a true copy taken  
from the Land records of Baltimore County Court in Liber N. G.  
N<sup>o</sup>. 130 folio 572 v<sup>c</sup>

I hereto set my hand & affix the seal of said  
Court this 16<sup>th</sup> day of March 1830

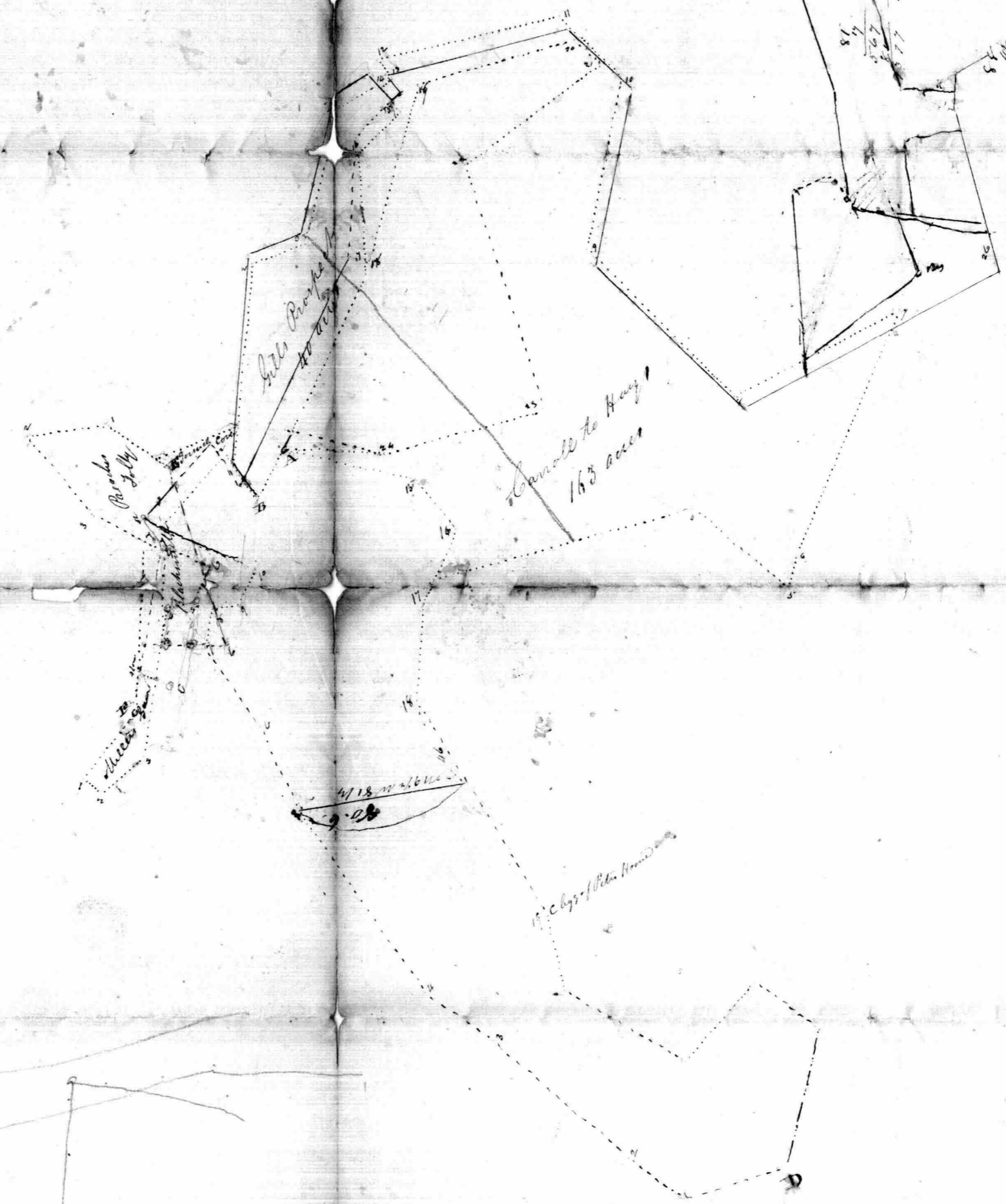
penance of 50 ps line of  
B & P of the legs, bears  
1308

at 10 1/2 ...  
O. C. ...  
Min @ 1/2 M

at 29 1/2 ...  
...  
... of ...

at 33 1/2 ...  
...  
...  
...  
...

80  
 163  
 90  
 70  
 20  
 4  
 M. J. P.  
 M. J. P.  
 M. J. P.



140  
 1168  
 576  
 2360  
 81  
 80  
 1168  
 576  
 2360  
 160/23033  
 11816  
 1120  
 316  
 81  
 176  
 352  
 5675

from Reg. of B. & P. Jolly  
 572 1/2 W. 1/4 to the 18 pole  
 of Rochester Survey, then  
 into the line of N. 1143 1/2 W. 1/4

80  
 70  
 150  
 163  
 40  
 20